



THOROLD

MARKEN HOMES

For over two decades, Marken Homes has been a symbol of excellence in the Niagara region, consistently dedicated to crafting luxurious homes for families.

We are thrilled to unveil our latest project, a prestigious enclave nestled in the heart of Thorold. This remarkable location is embraced by contemporary amenities, educational institutions of the highest caliber, and convenient access to highway 406 & QEW.

Our latest meticulously planned community stands as a testament to our unwavering commitment to excellence. Here, you will discover an array of extraordinary Townhomes, Semi-Detached Homes & Single -Detached homes, ranging from

exquisite Bungalow-Lofts to magnificent Two-Story Residences. Moreover, select lots within this remarkable site offer the unique allure of separate entrances.

Join us in forging a new chapter of unparalleled elegance and make Elvira Way Estates your proud and distinguished home...



- DETACHED

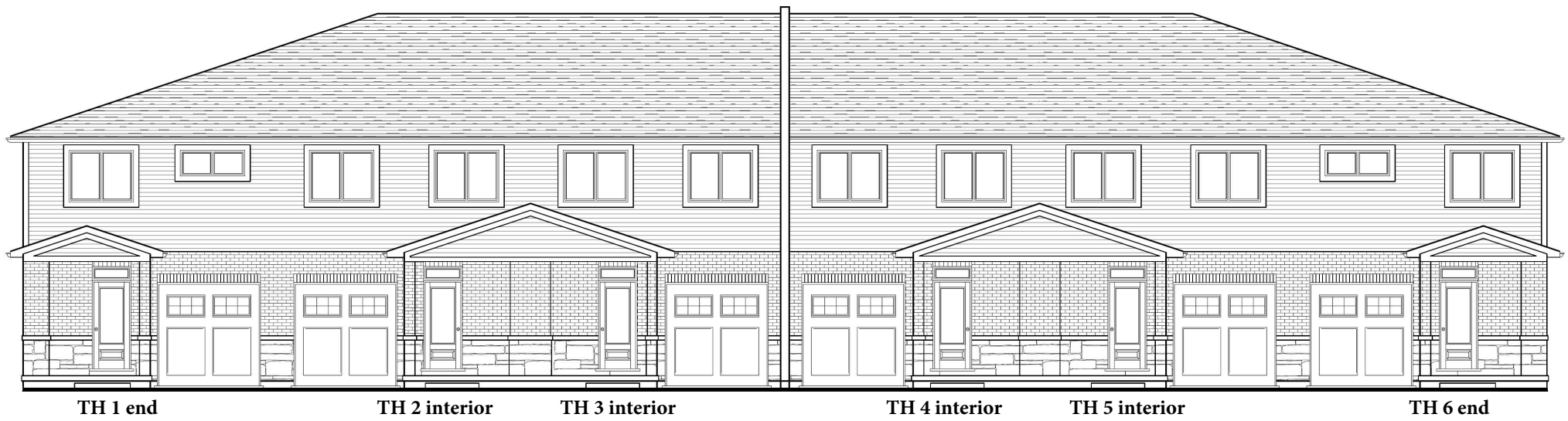
- SEMI-DETACHED

- TOWNHOME



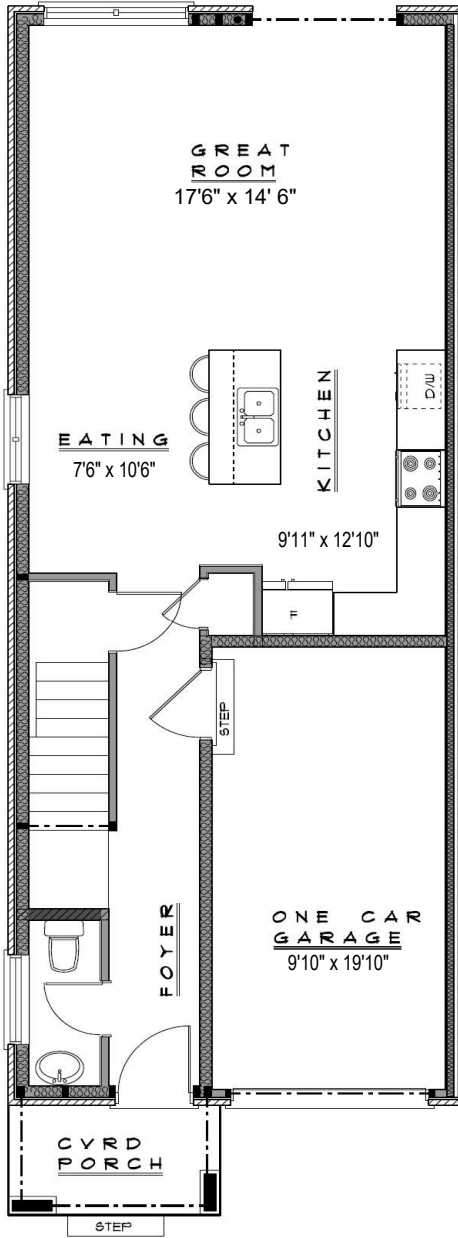
Artistic Concept. Sizes and specifications are subject to change without notice. E.&O.E.

Block 24 - Townhomes

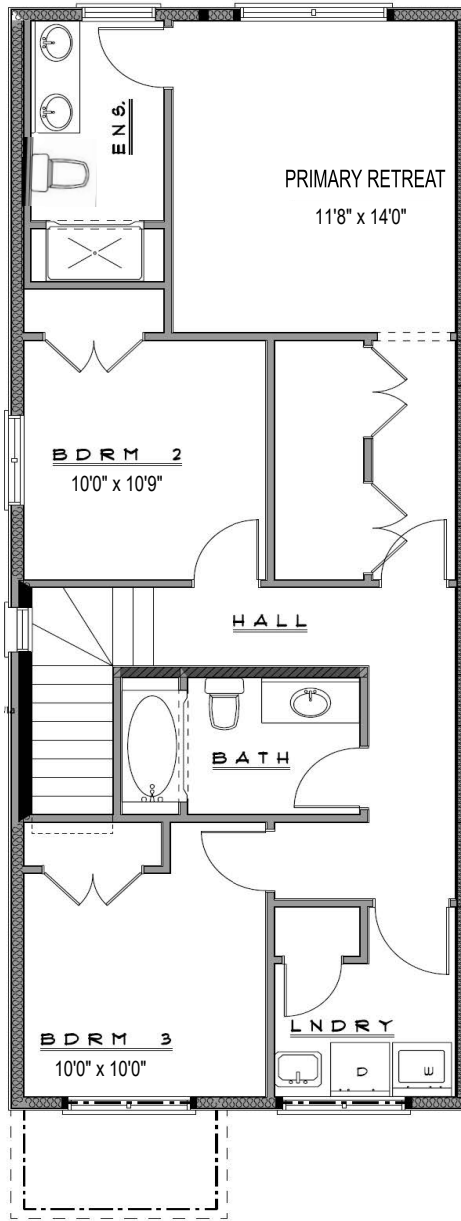


TH 1-End-Total finished area 2095 sqft
 1542 sqft + 553 sqft of finished basement

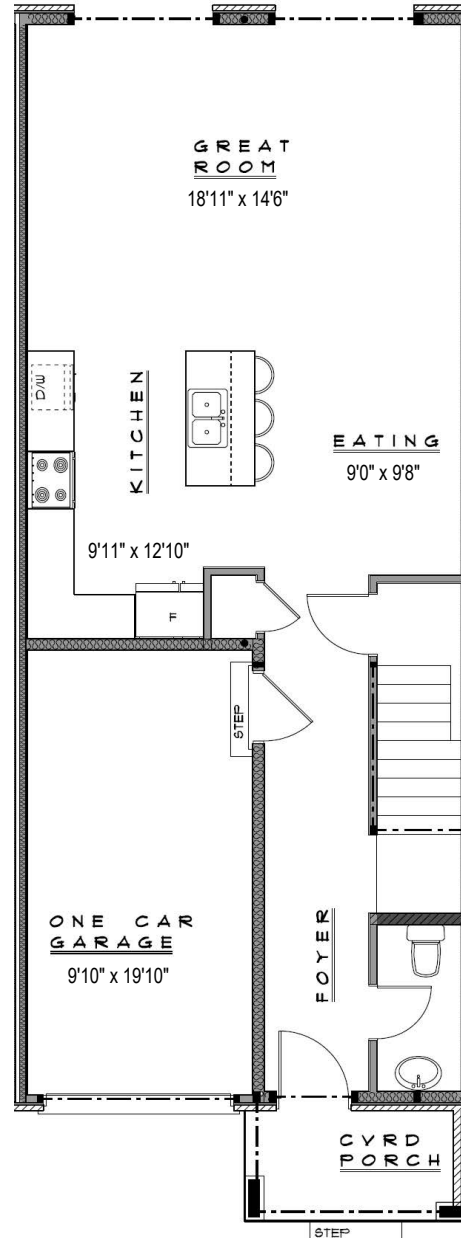
TH 2-Interior-Total finished area 2325 sqft
 1683 sqft +642 sqft of finished basement



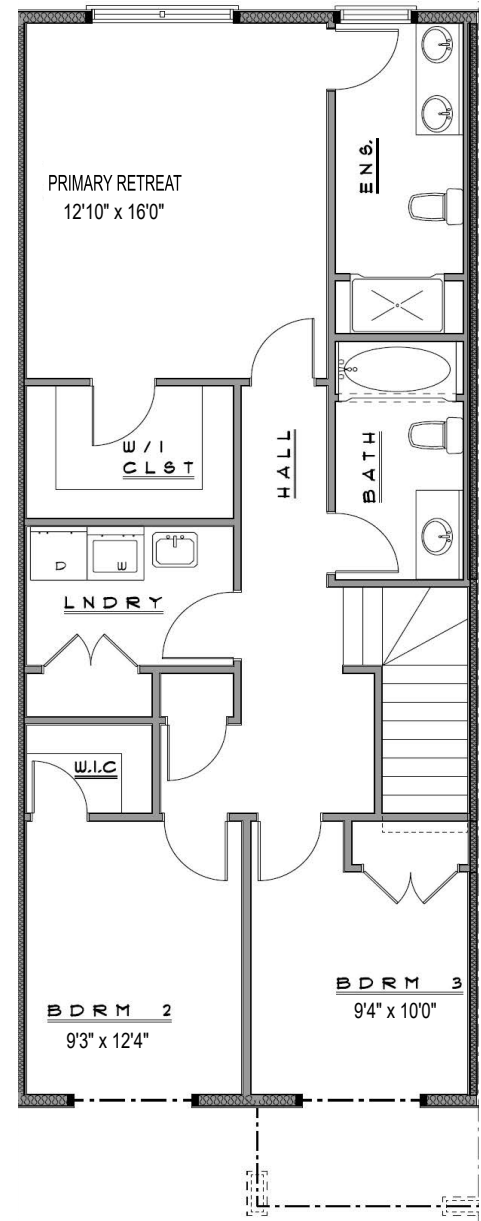
TH 1 Main



TH 1 Upper



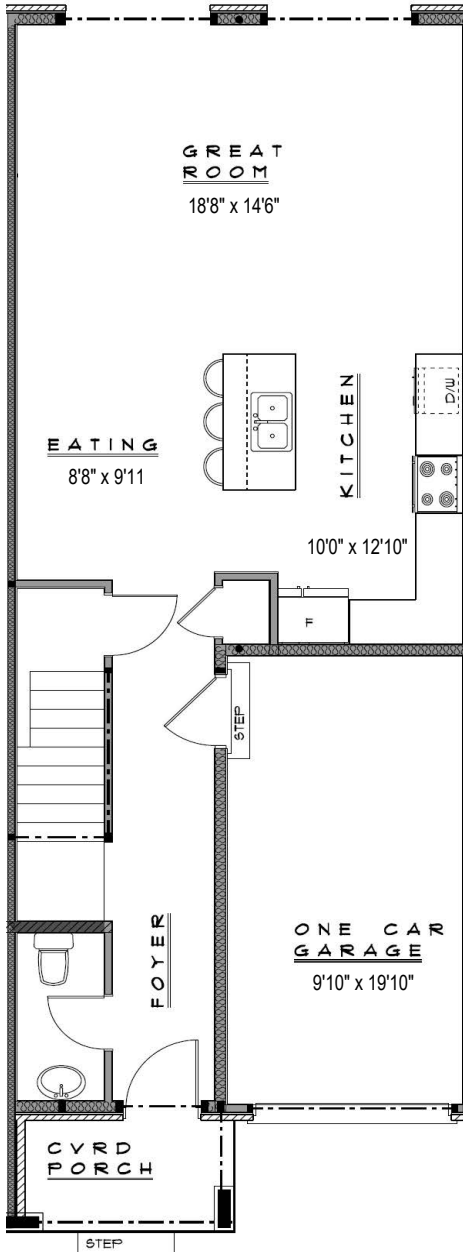
TH 2 Main



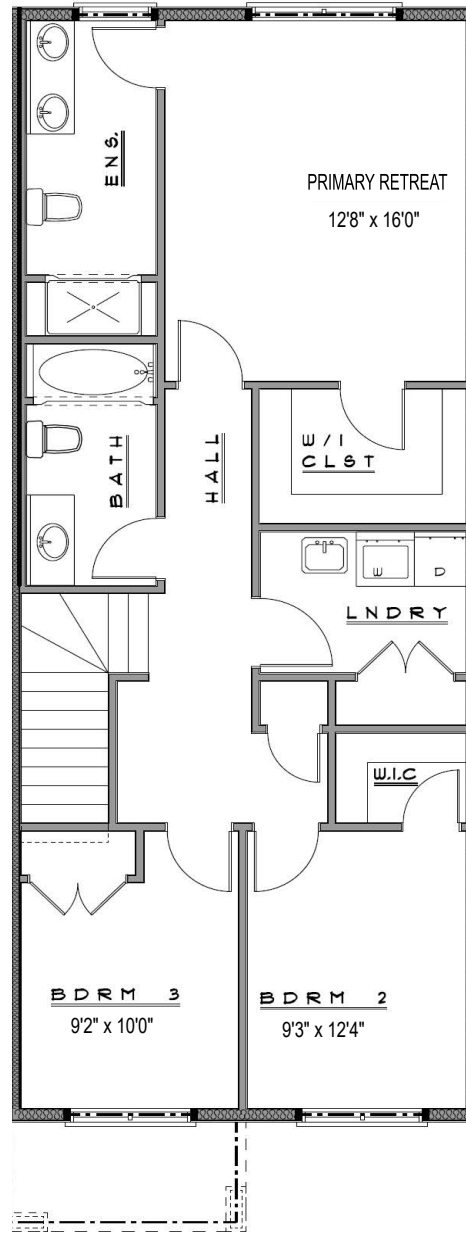
TH 2 Upper

TH 3-Interior-Total finished area 2325 sqft
1683 sqft + 642 sqft of finished basement

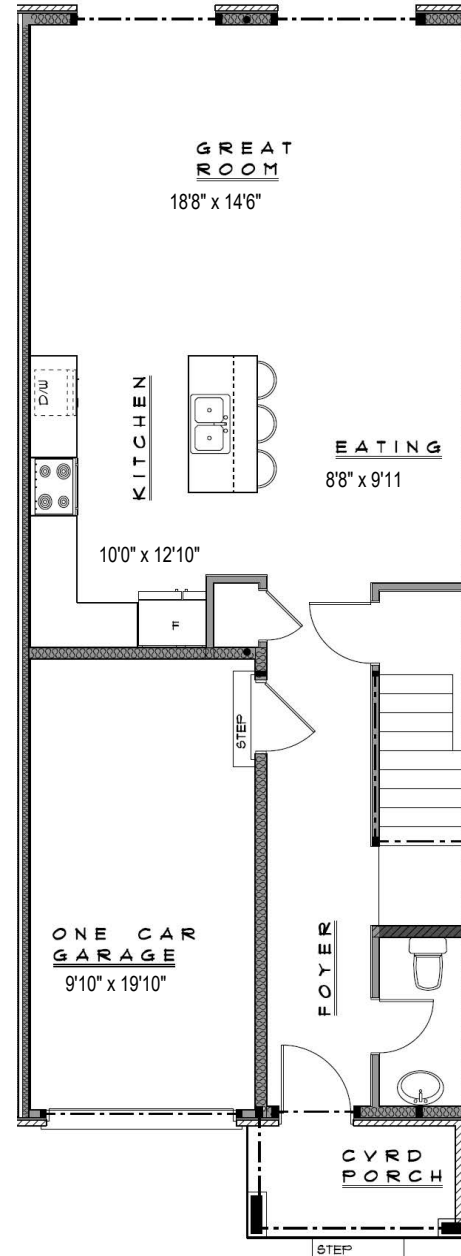
TTH 4-Interior-Total finished area 2325 sqft
1683 sqft + 642 sqft of finished basement



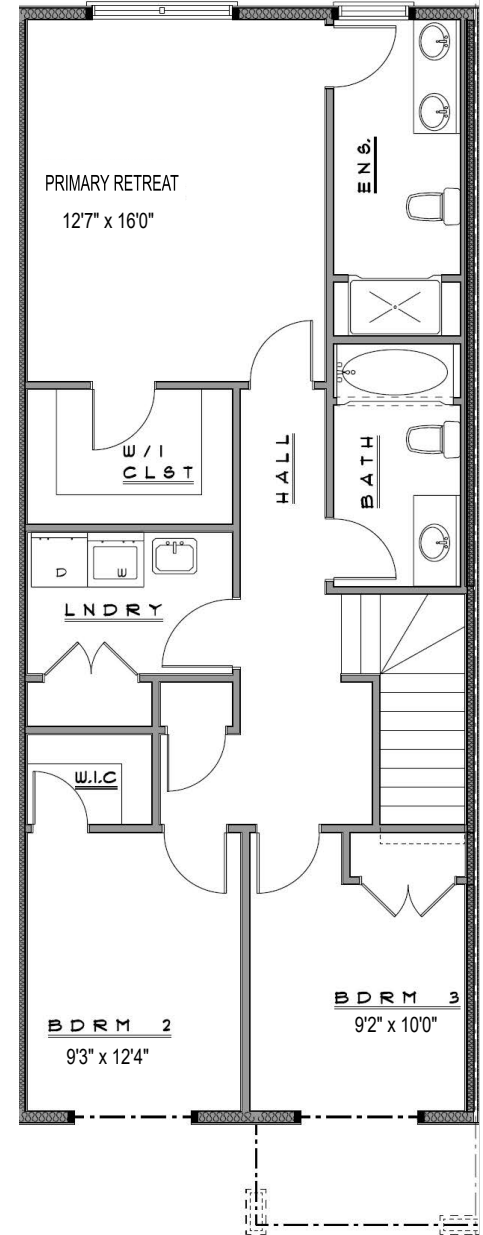
TH 3 Main



TH 3 Upper



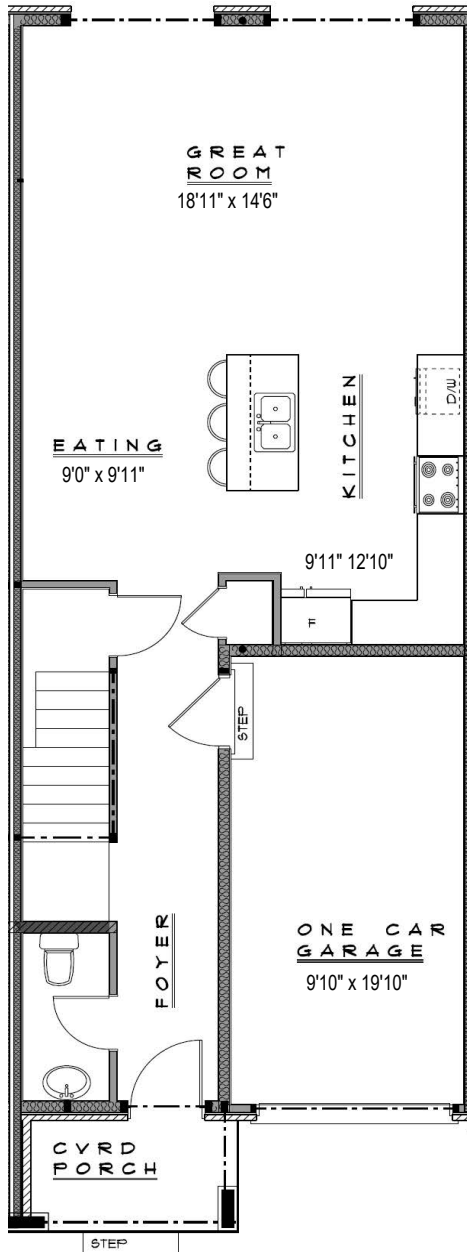
TH 4 Main



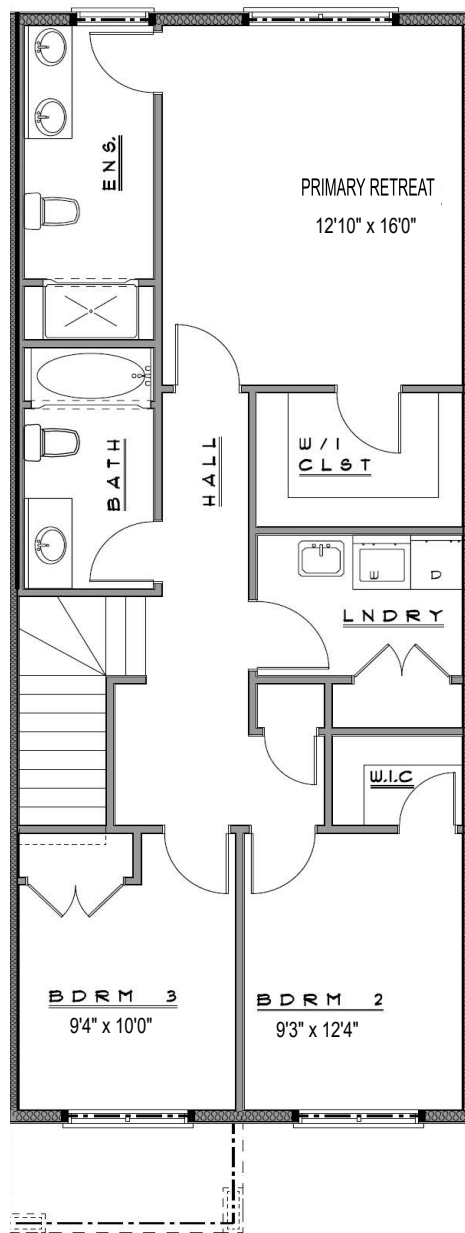
TH 4 Upper

TH 5-Interior-Total finished area 2325 sqft
 1683 sqft + 642 sqft of finished basement

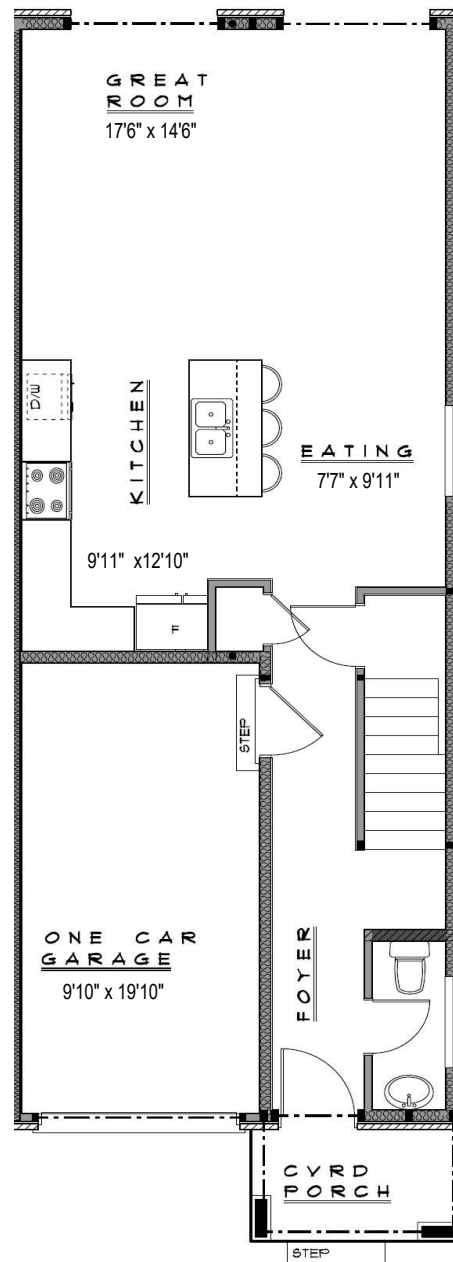
TH 6-End-Total finished area 2095 sqft
 1542 sqft + 553 sqft of finished basement



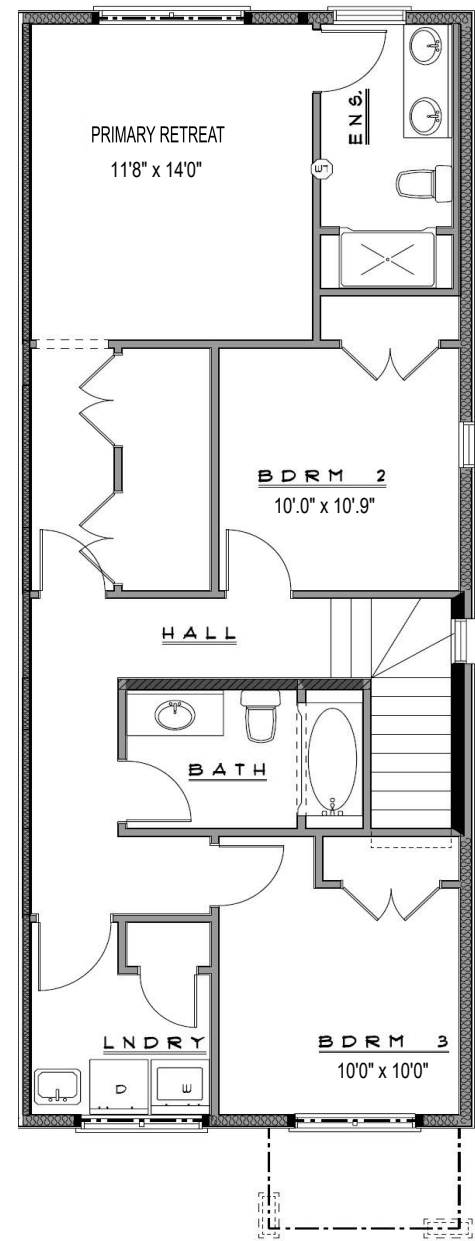
TH 5 Main



TH 5 Upper



TH 6 Main



TH 6 Upper

Block 25 - Townhomes



TH 1 end

TH 2 interior

TH 3 interior

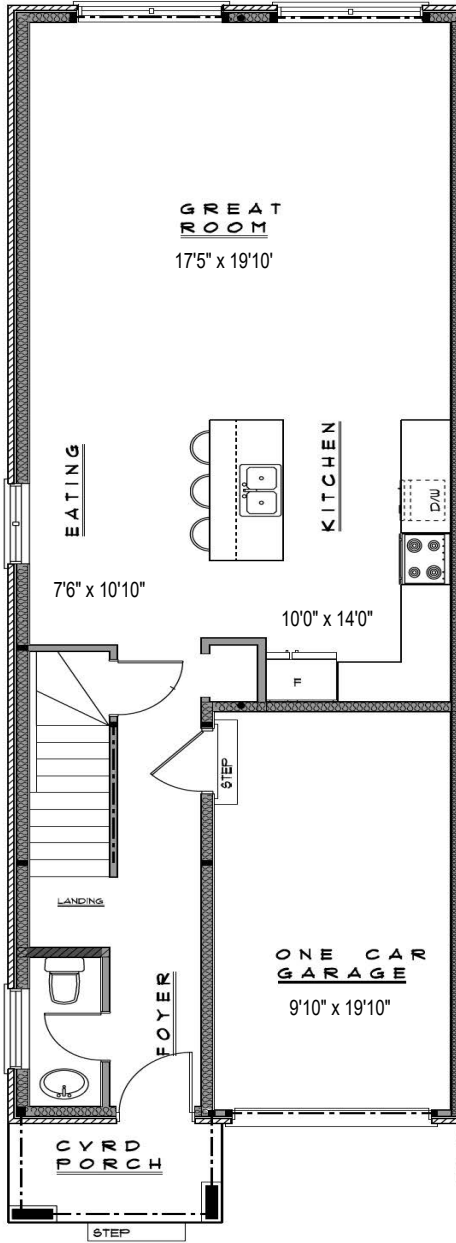
TH 4 interior

TH 5 interior

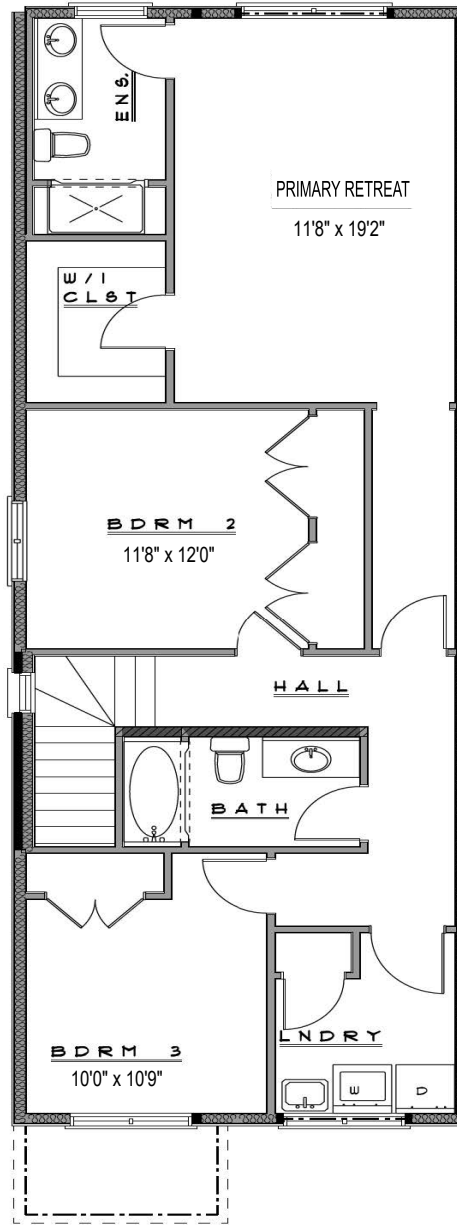
TH 6 corner

TH 1-End-Total finished area 2555 sqft
 1837 sqft + 718 sqft of finished basement

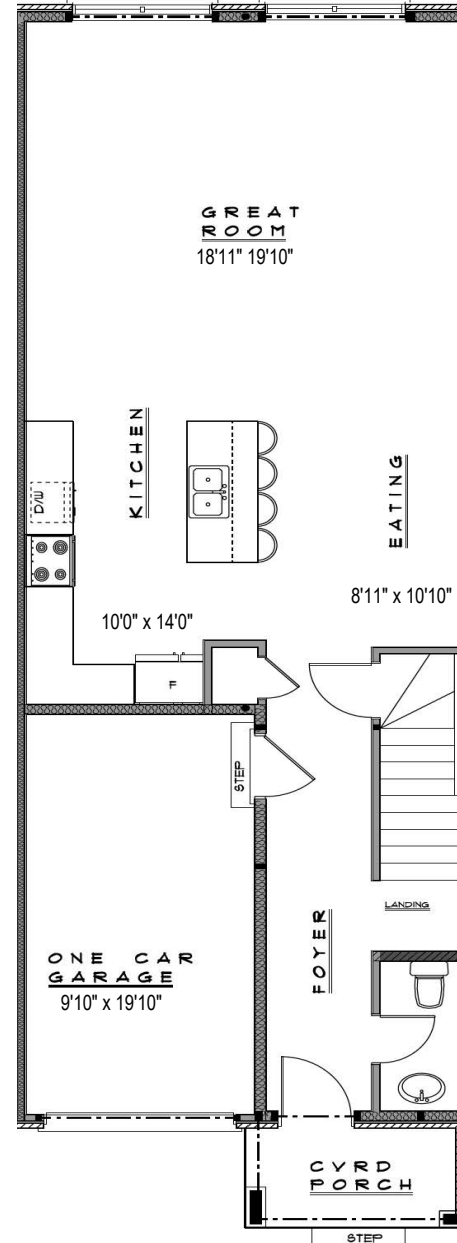
TH 2-Interior-Total finished area 2698 sqft
 1939 sqft + 759 sqft of finished basement



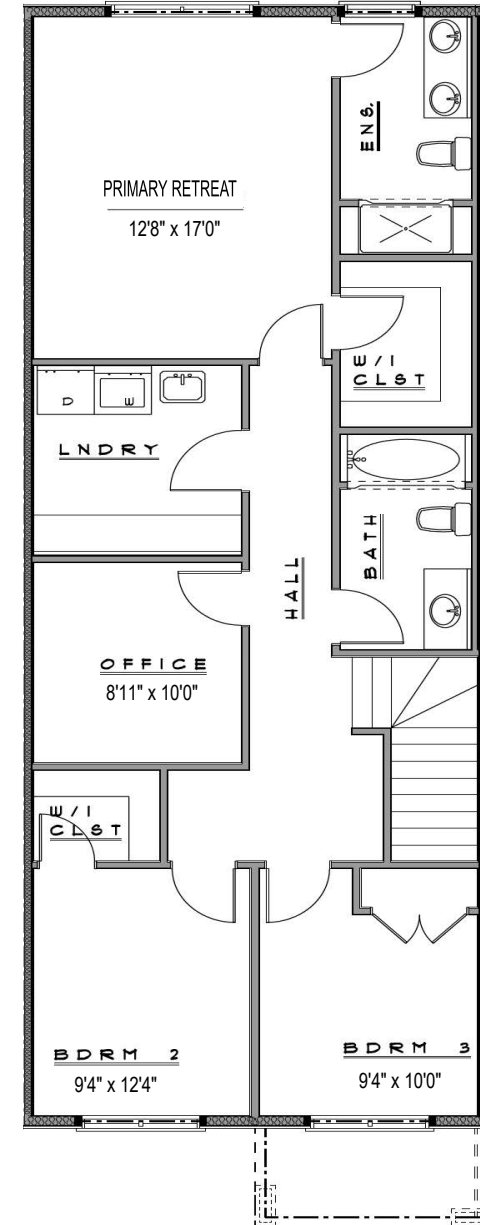
TH 1 Main



TH 1 Upper



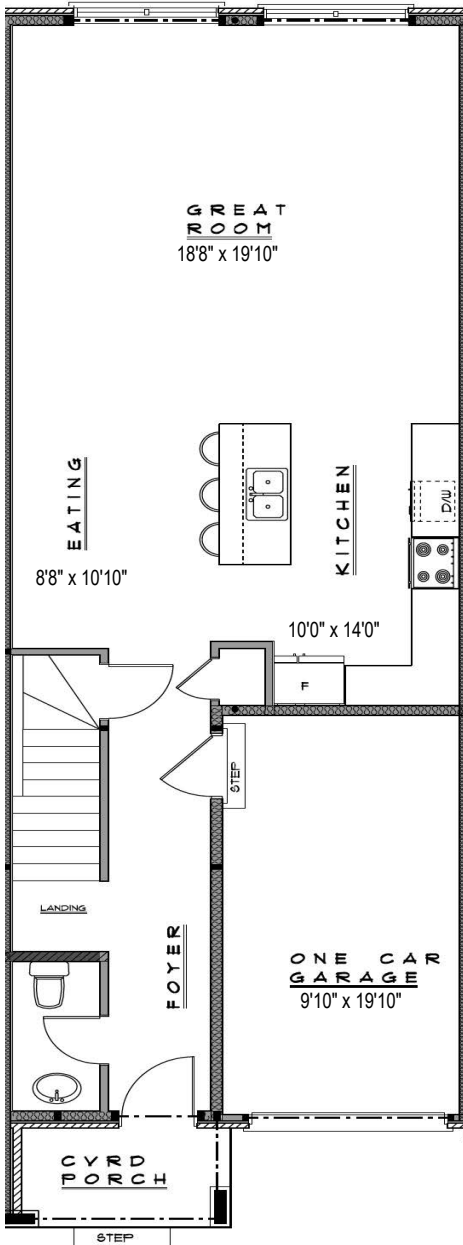
TH 2 Main



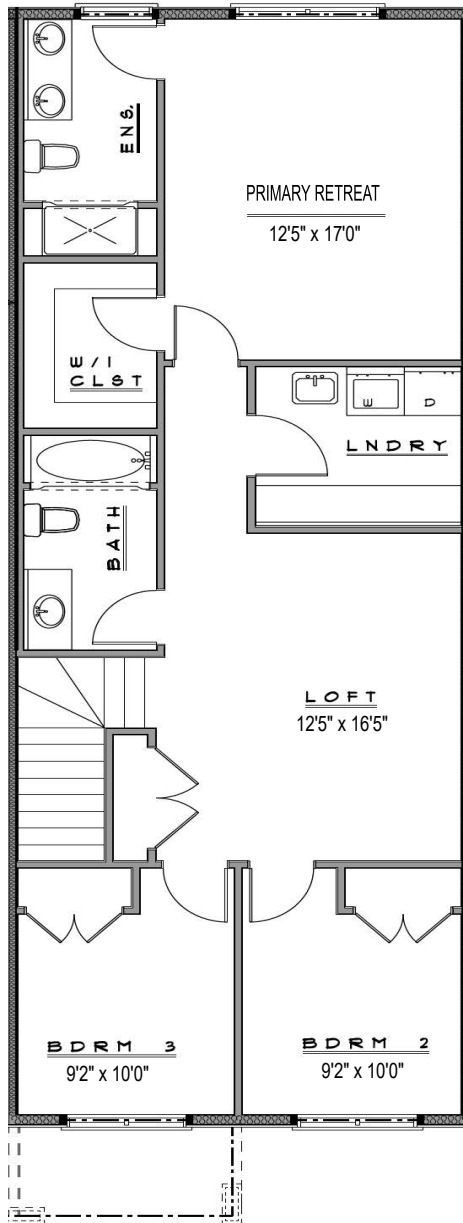
TH 2 Upper

TH 3-Interior-Total finished area 2698 sqft
1939 sqft + 759 sqft of finished basement

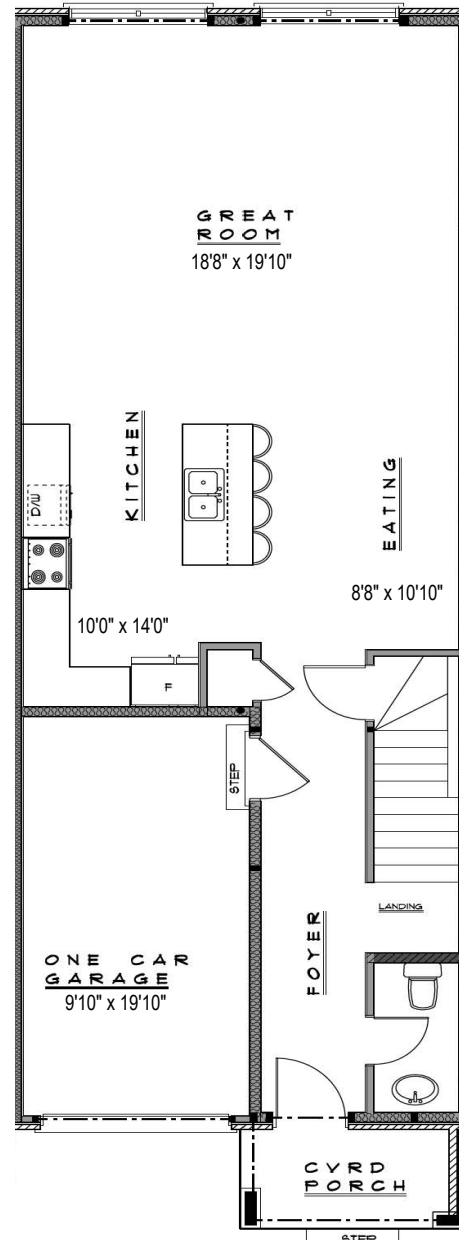
TTH 4-Interior-Total finished area 2698 sqft
1939 sqft + 759 sqft of finished basement



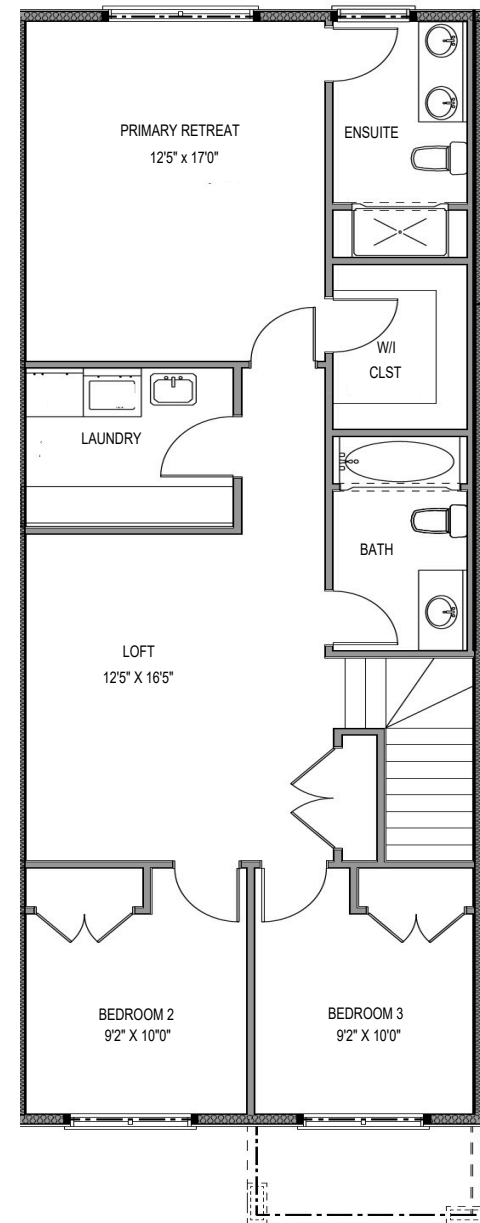
TH 3 Main



TH 3 Upper



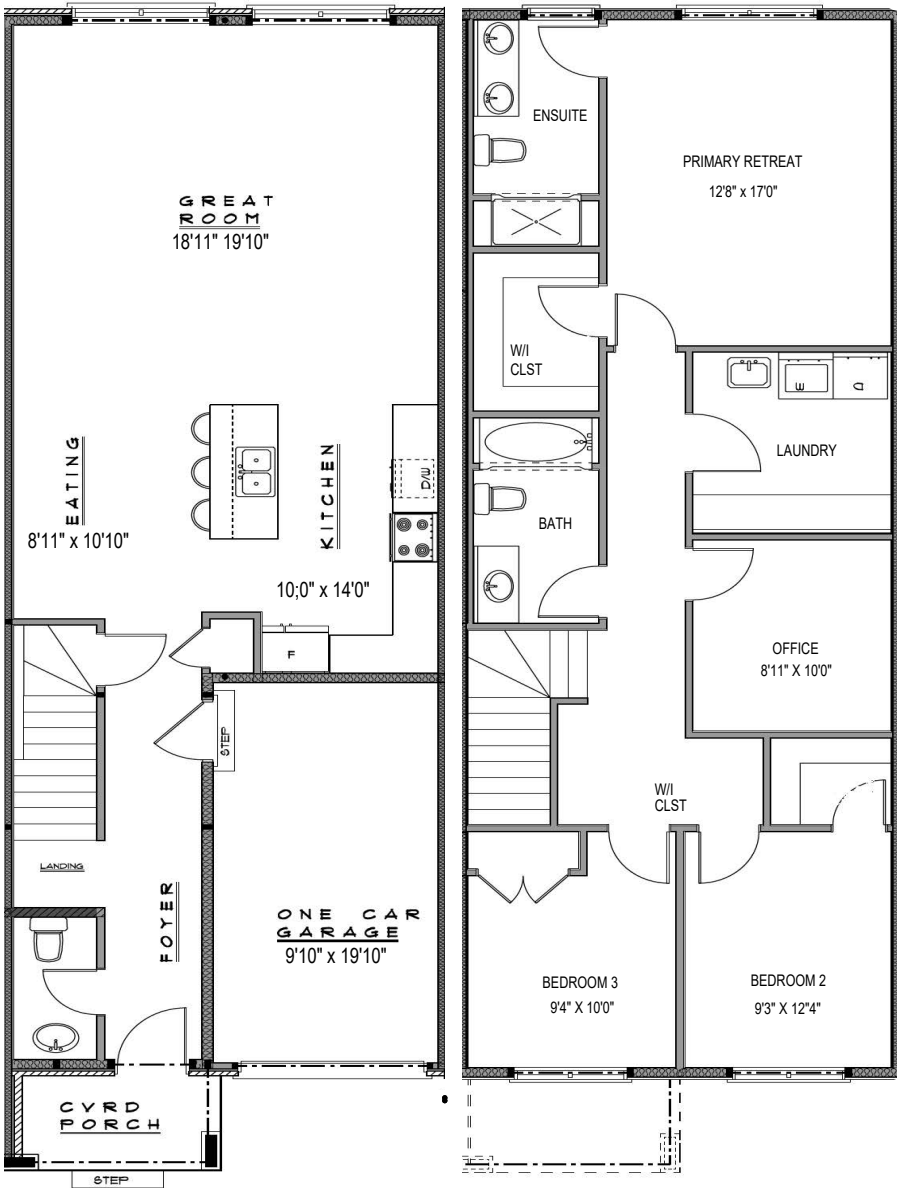
TH 4 Main



TH 4 Upper

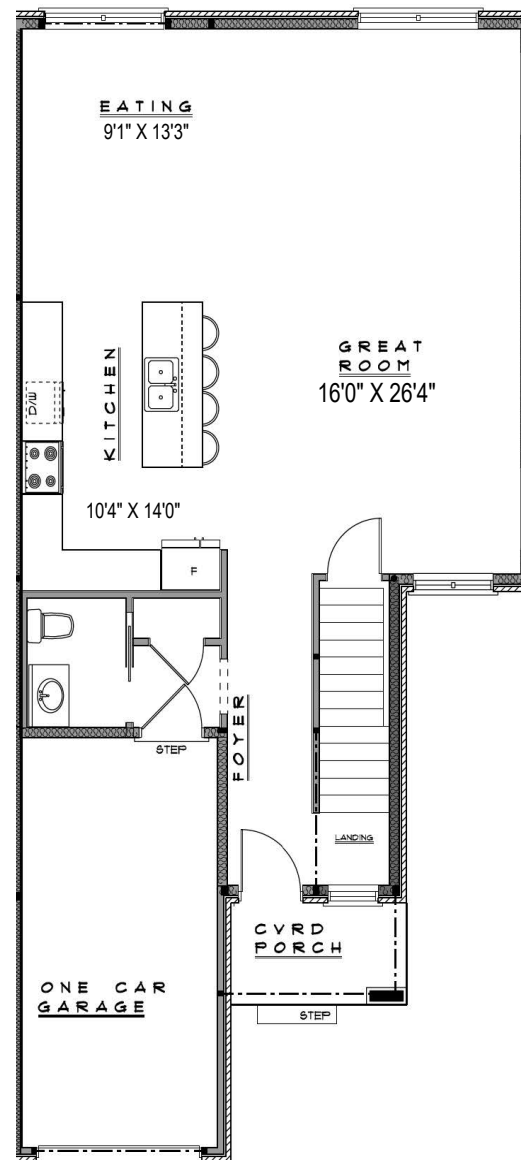
TH 5-Interior-Total finished area 2698 sqft
 1939 sqft + 759 sqft of finished basement

TH 6-Corner-Total finished area 2804 sqft
 2023 sqft + 781 sqft of finished basement

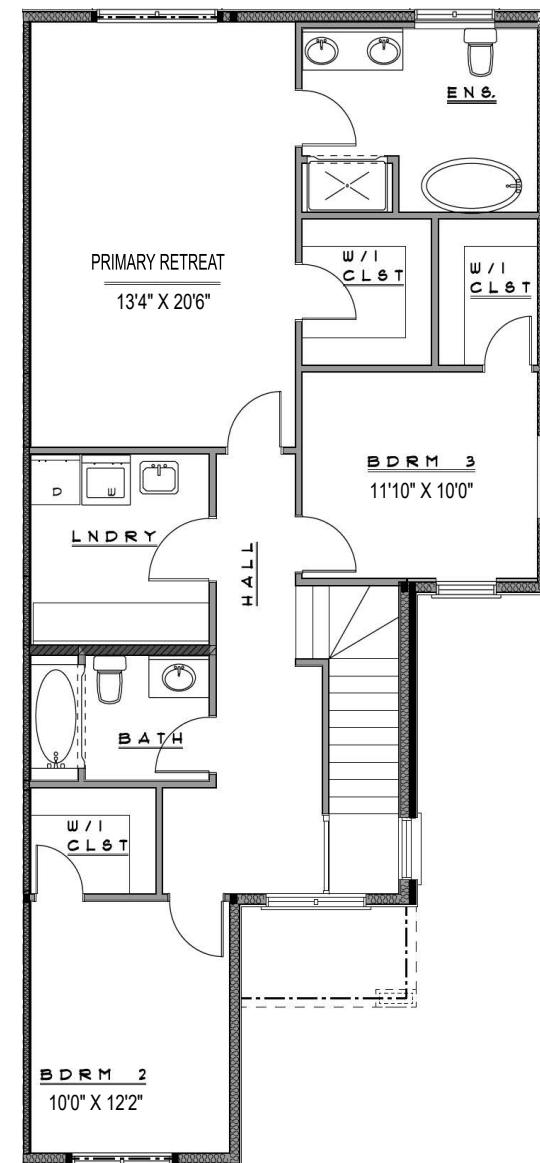


TH 5 Main

TH 5 Upper



TH 6 Main



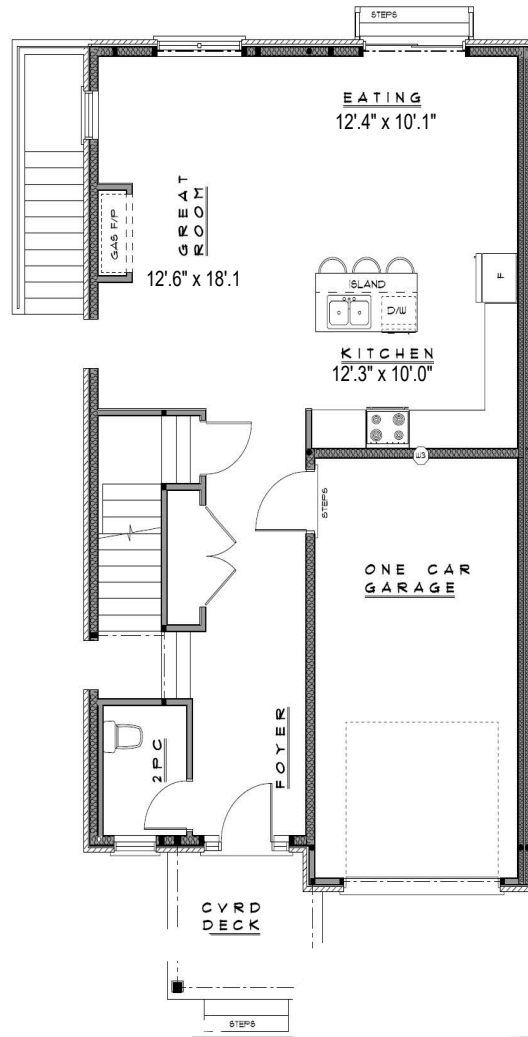
TH 6 Upper

Block 22 - Semi Detached

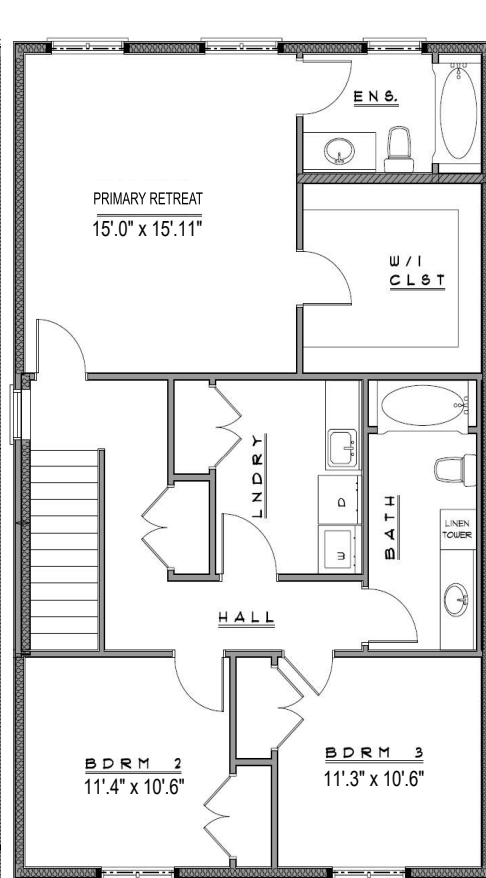


22 - L

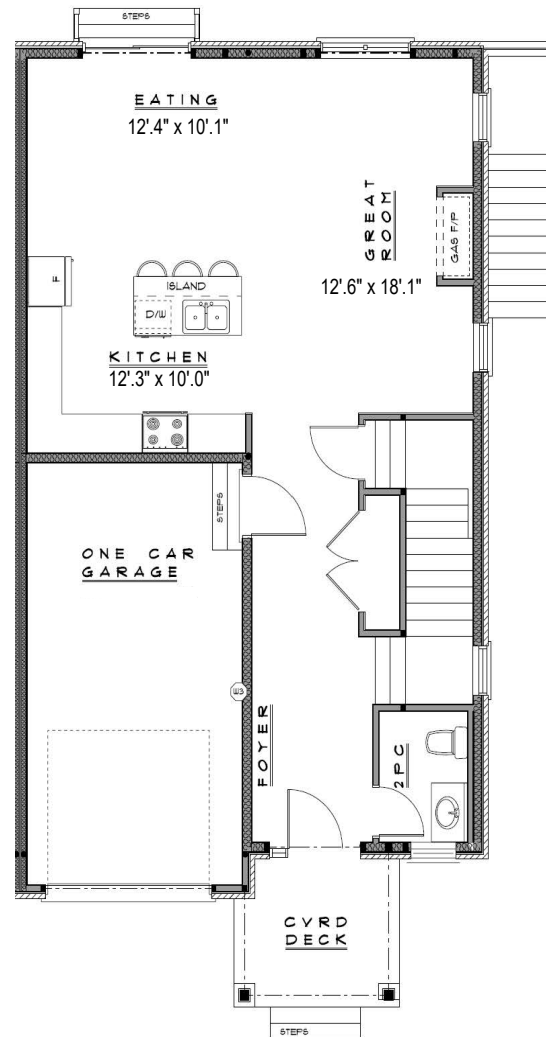
22 - R



22 - L Main



22 - L Upper



22 - R Main



22 - R Upper

Block 23 - Semi Detached

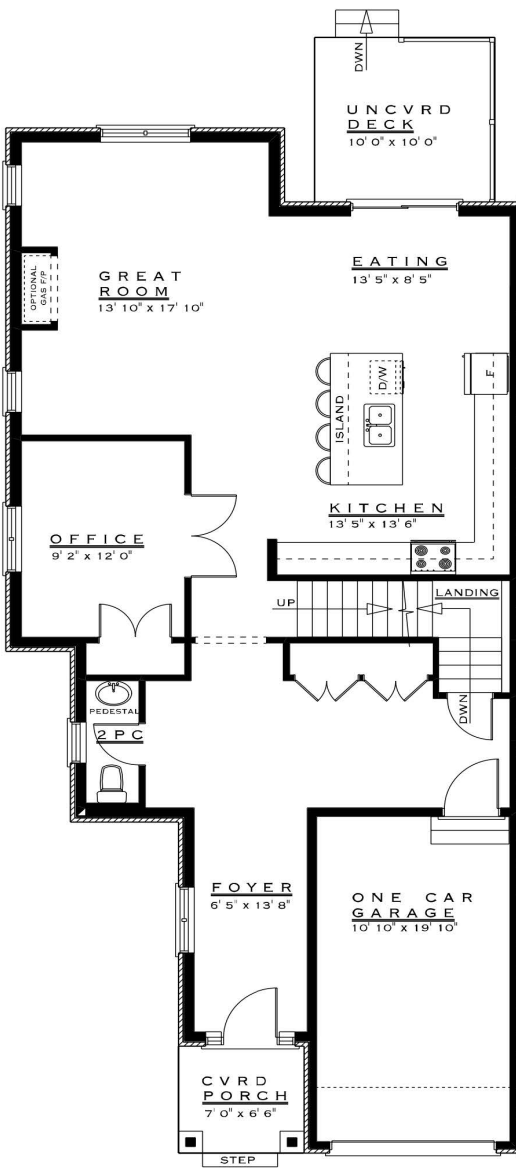


23 - L

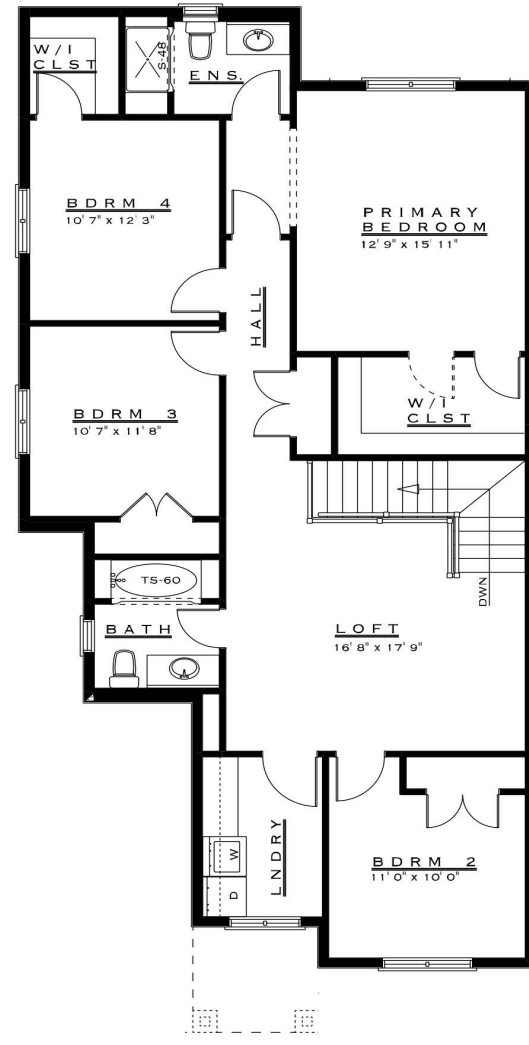
23 - R

SEMI 23-L-Total finished area 3366 sqft
2548 sqft + 818 sqft of finished basement

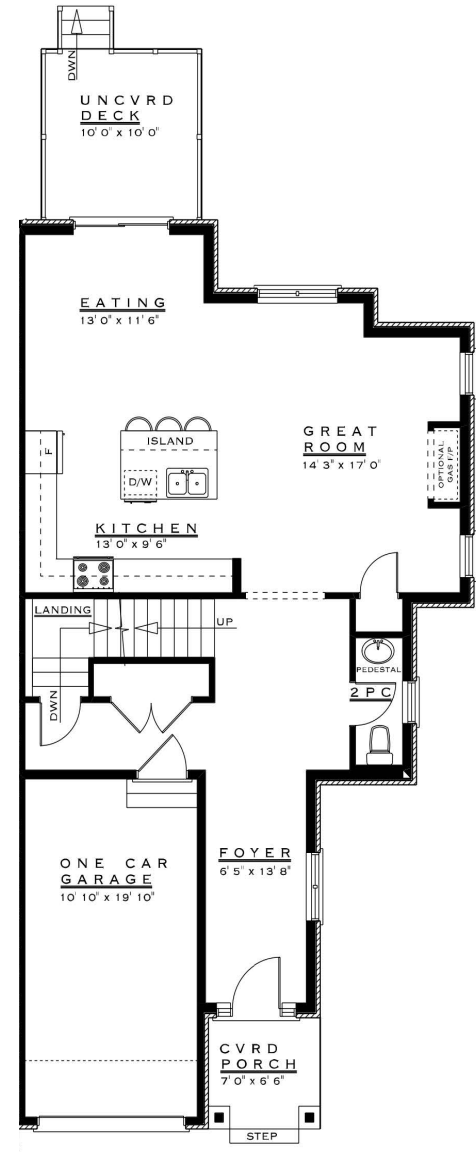
SEMI 23-R-Total finished area 2580 sqft
1993 sqft + 587 sqft of finished basement



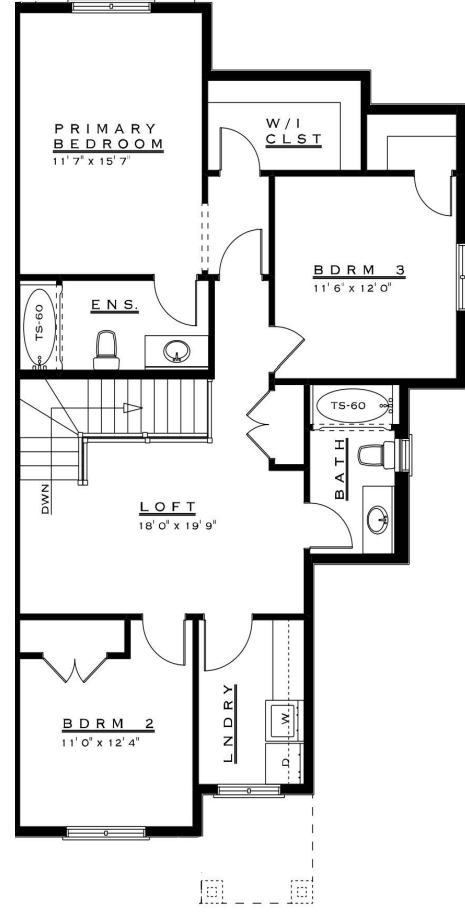
23 L - Main



23 L - Upper



23 R - Main

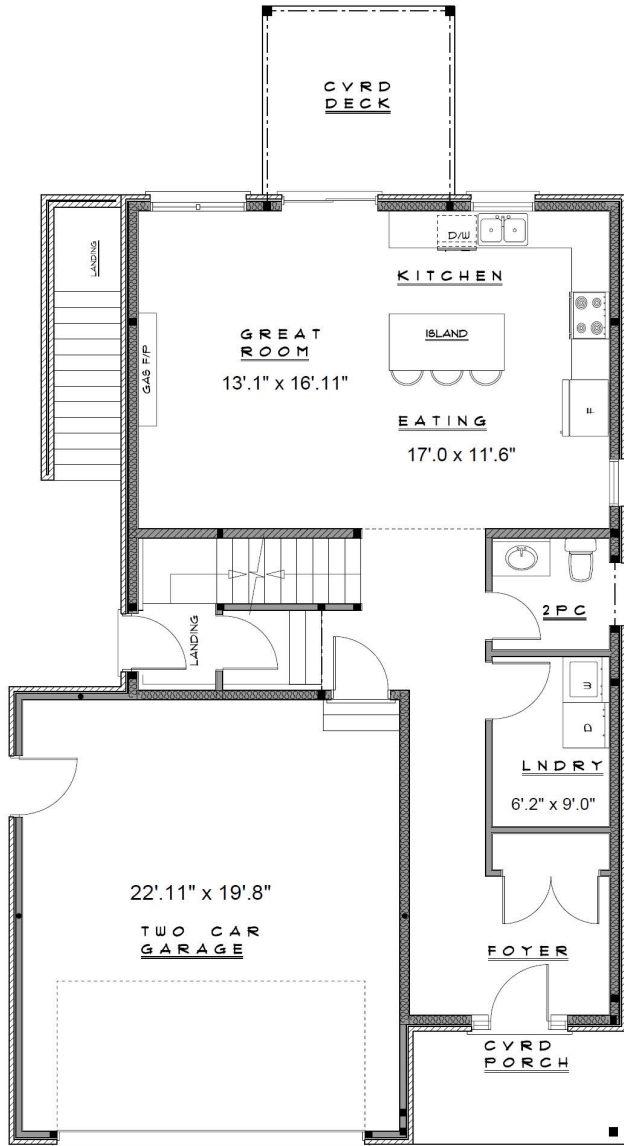


23 R - Upper

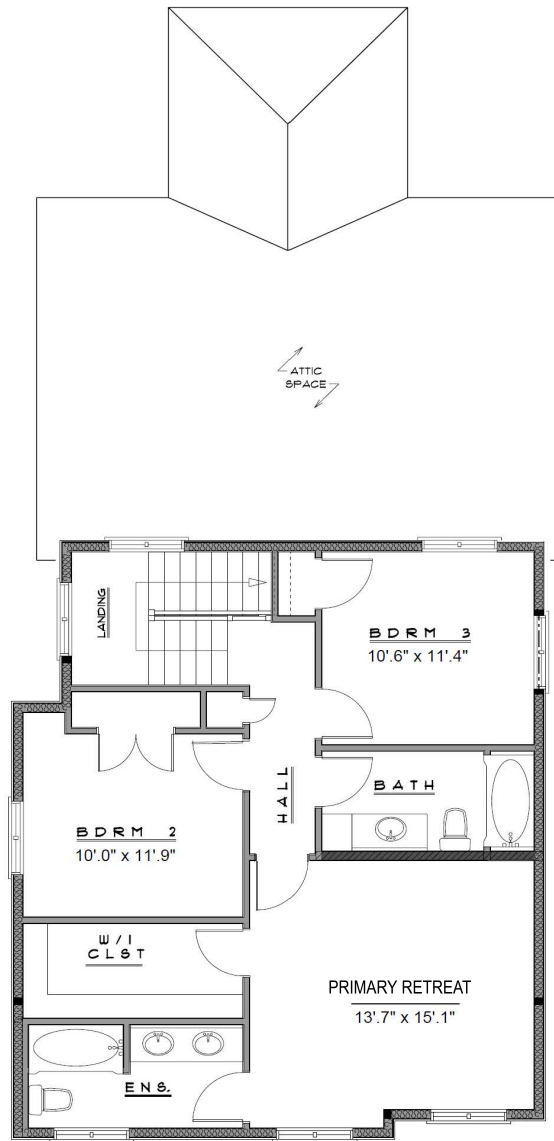
LOT 10 DETACHED



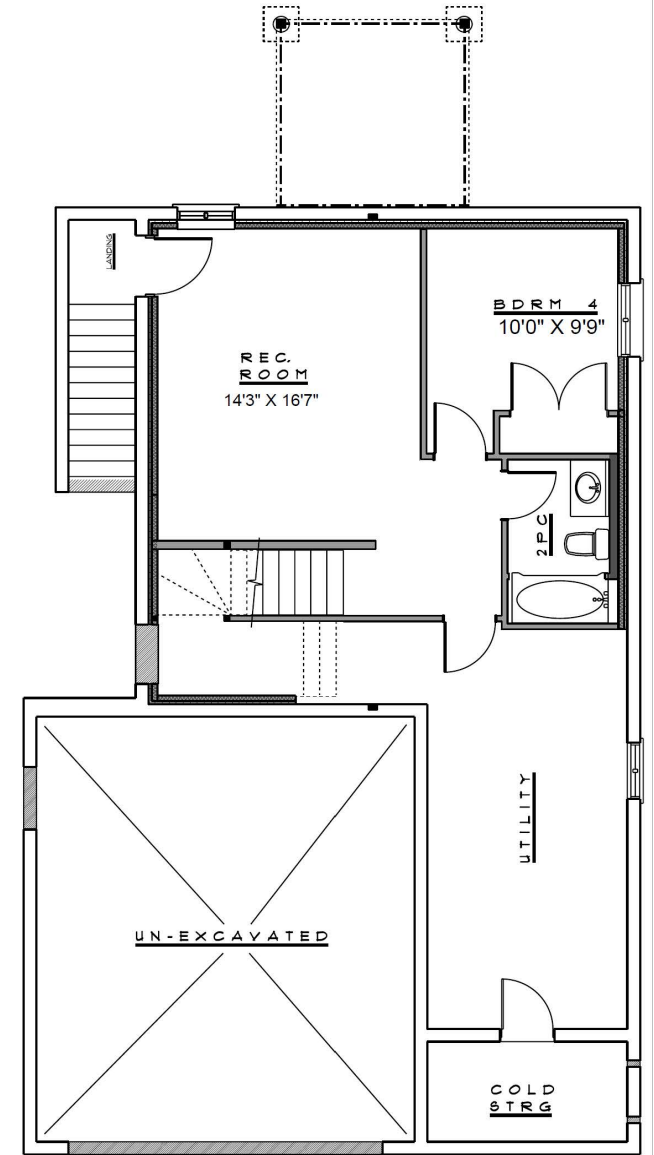
Total finished area 2294 sqft.
 1724 sqft. + 570 sqft. of finished basement



MAIN FLOOR



SECOND FLOOR

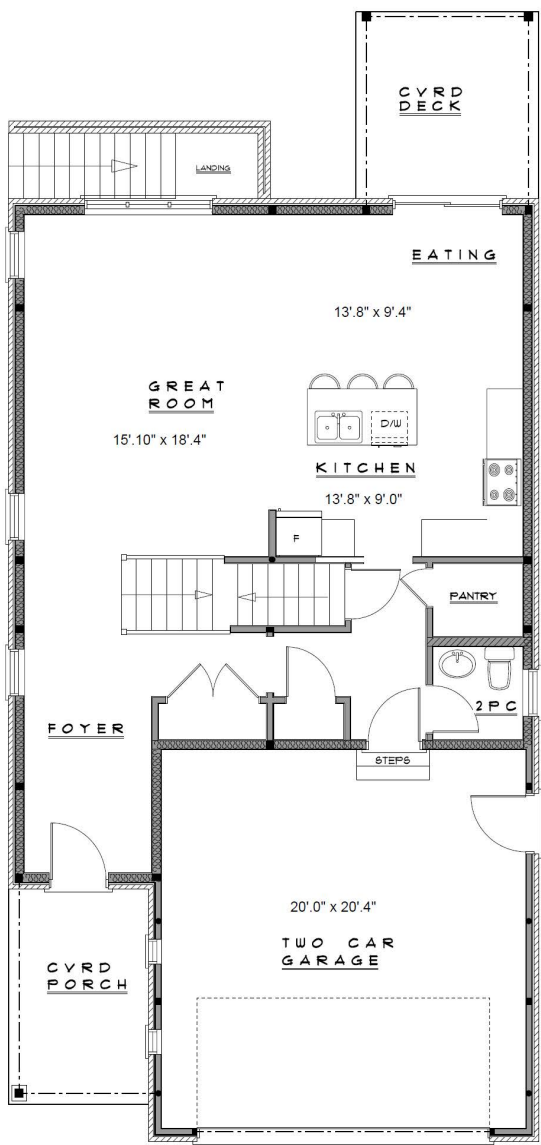


FINISHED BASEMENT

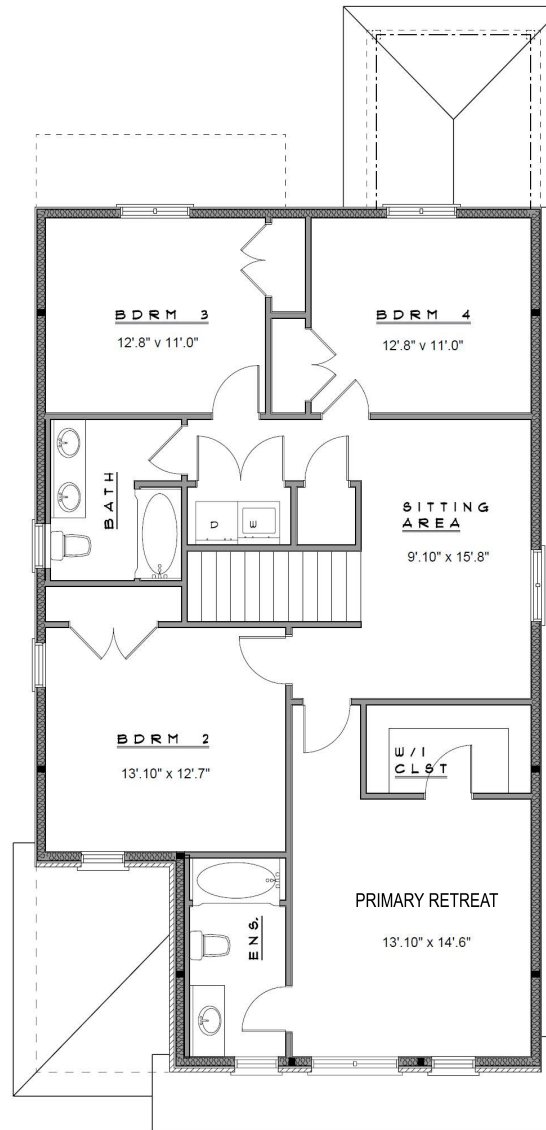
LOT 11 DETACHED



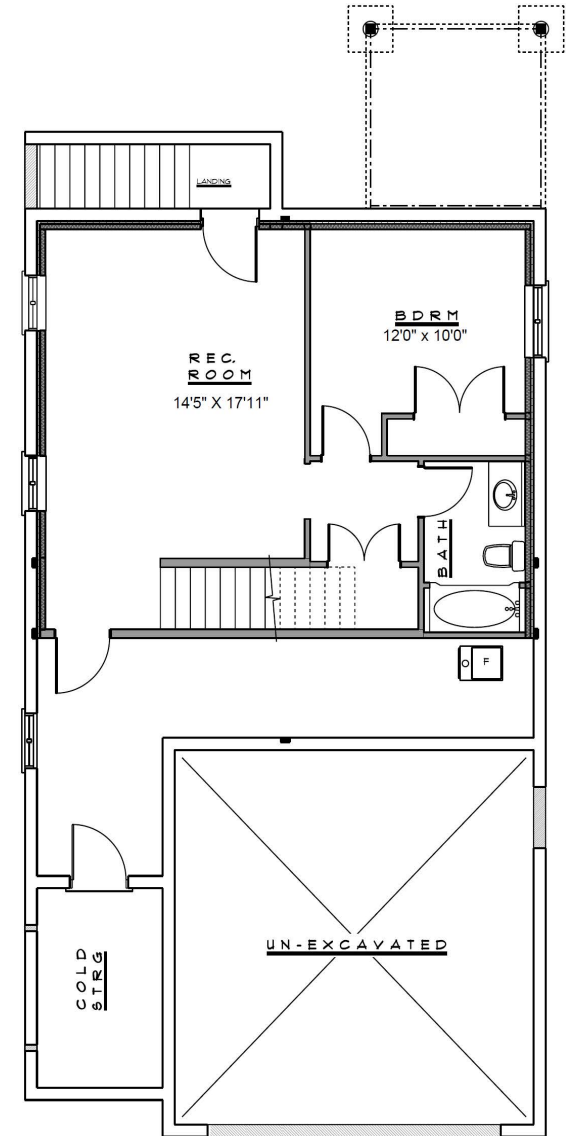
Total finished area 2808 sqft.
2158 sqft. + 650 sqft. of finished basement



MAIN FLOOR



SECOND FLOOR



FINISHED BASEMENT

Elvira Way Estates - LOT 11

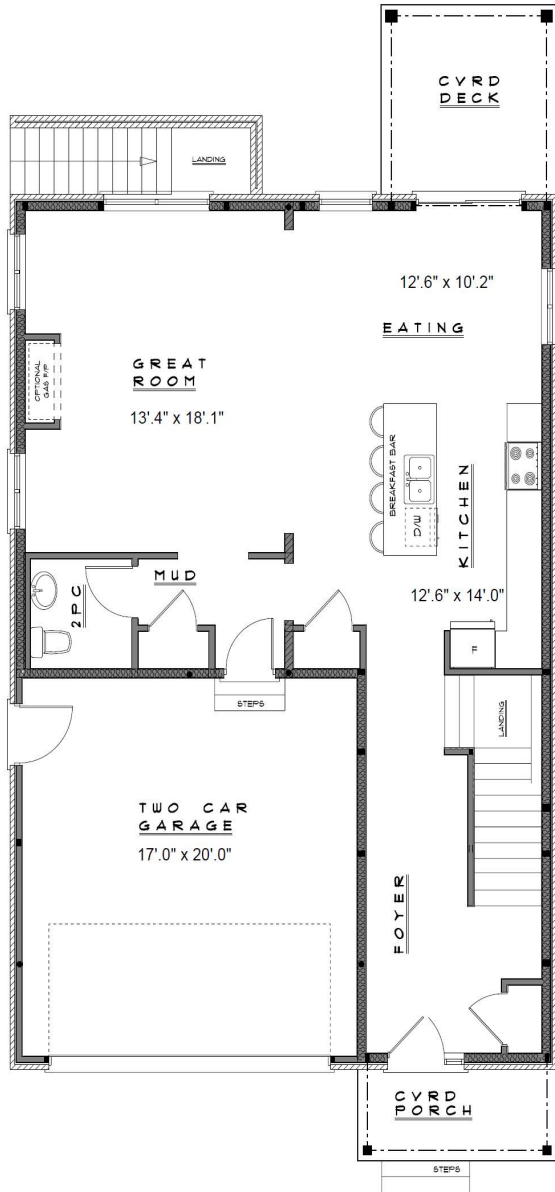
MARKEN HOMES

DIMENSIONS & LAYOUTS ARE APPROXIMATE, MAY VARY, AND ARE SUBJECT TO CHANGE. PLANS MAY BE REVERSED. ILLUSTRATIONS ARE ARTIST'S CONCEPT. E.&O.E.

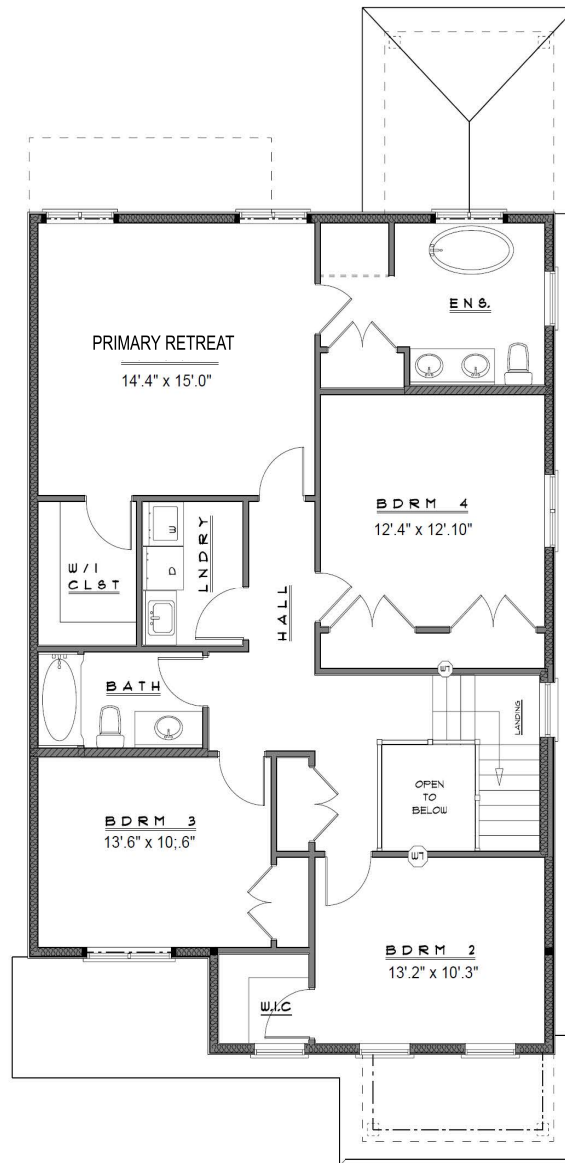
LOT 12 DETACHED



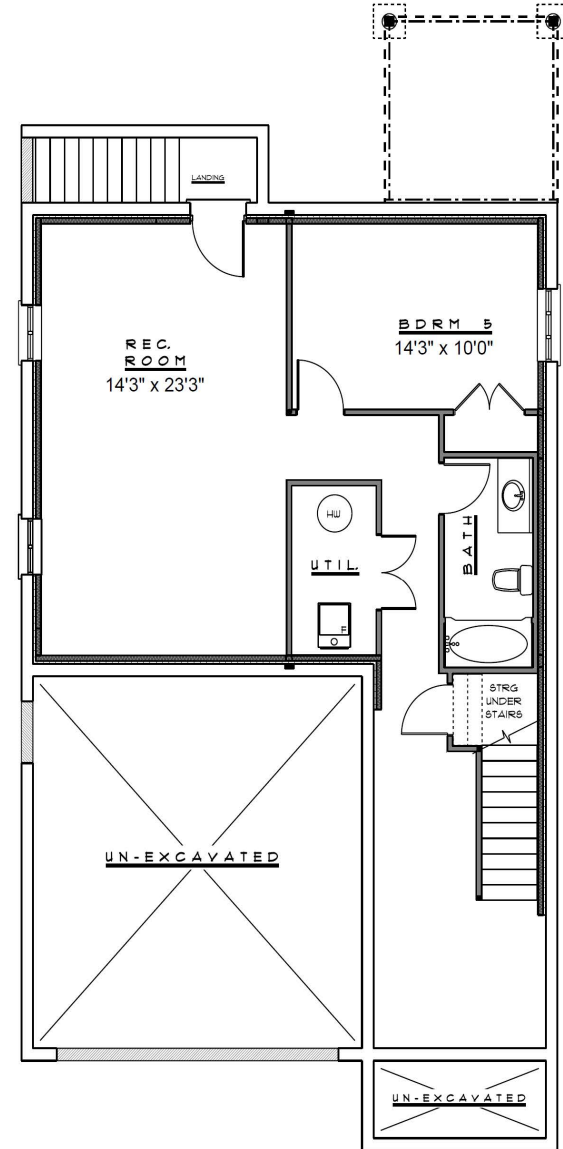
Total finished area 3096 sqft.
 2226 sqft. + 870 sqft. of finished basement



MAIN FLOOR



SECOND FLOOR

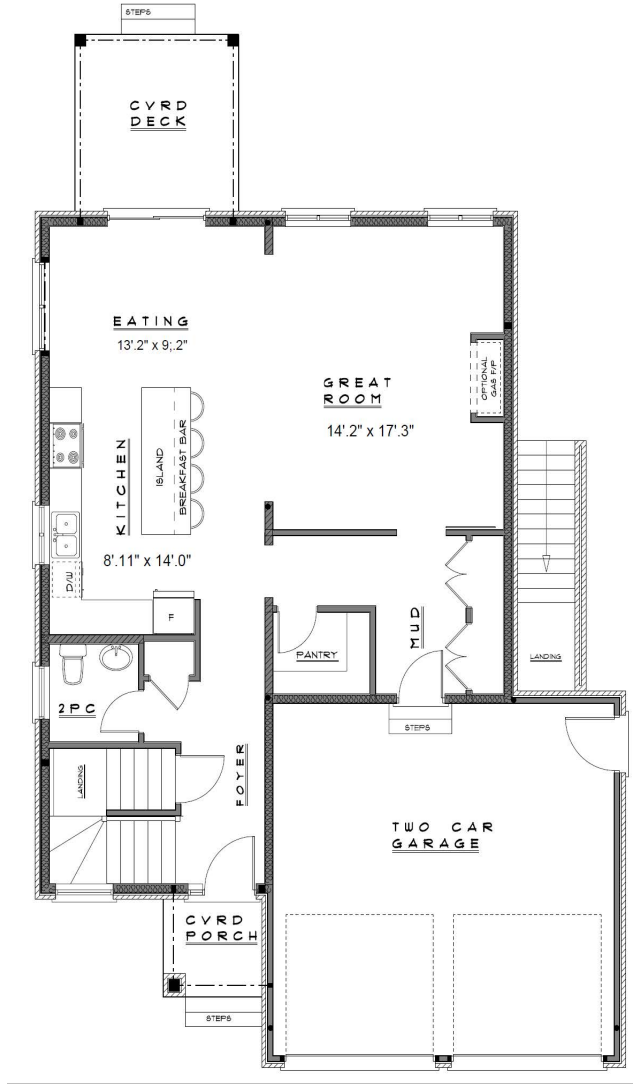


FINISHED BASEMENT

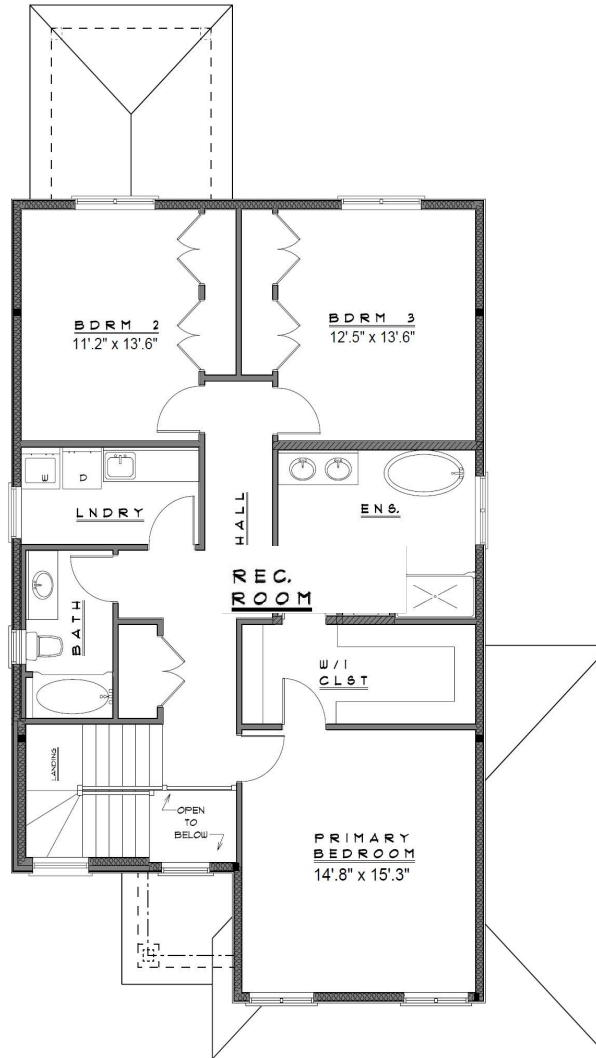
LOT 13 DETACHED



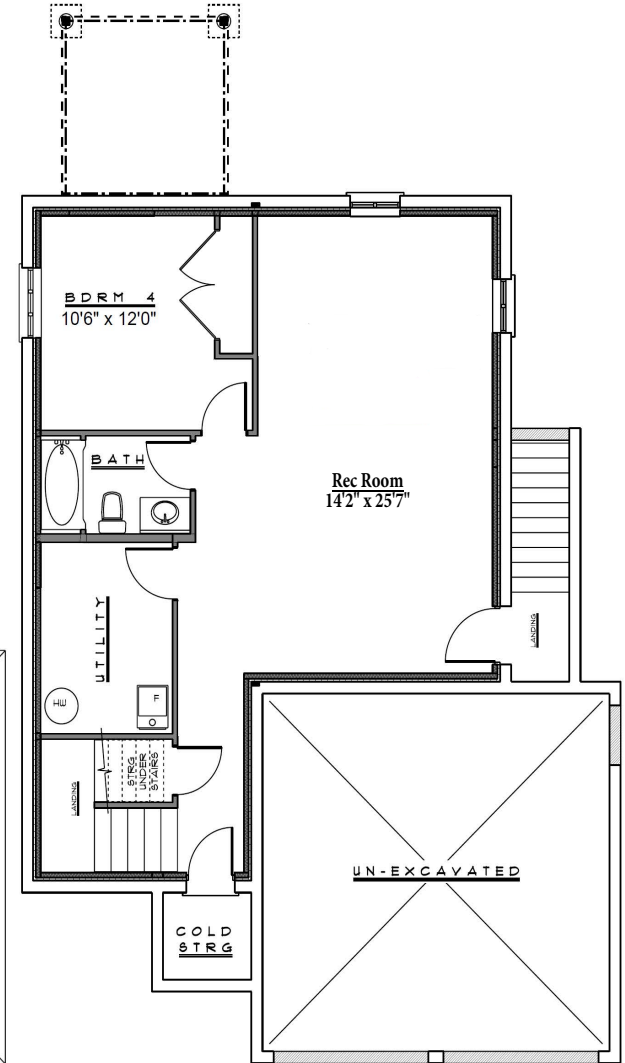
Total finished area 2985 sqft.
 2085 sqft. + 900 sqft. of finished basement



MAIN FLOOR



SECOND FLOOR



FINISHED BASEMENT

Elvira Way Estates - LOT 13

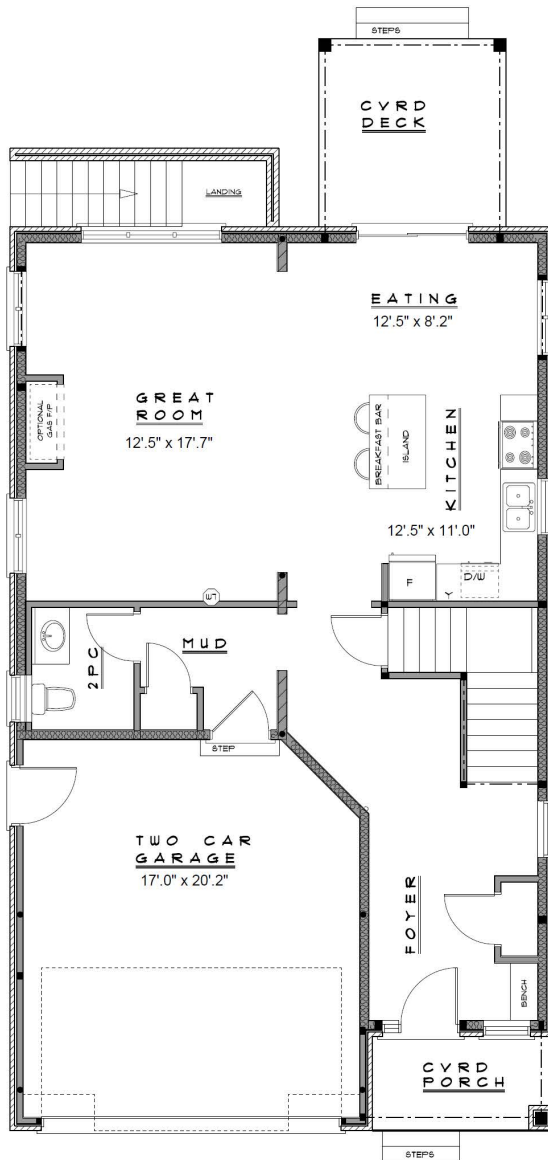
MARKEN HOMES

DIMENSIONS & LAYOUTS ARE APPROXIMATE, MAY VARY, AND ARE SUBJECT TO CHANGE. PLANS MAY BE REVERSED. ILLUSTRATIONS ARE ARTIST'S CONCEPT. E.&O.E.

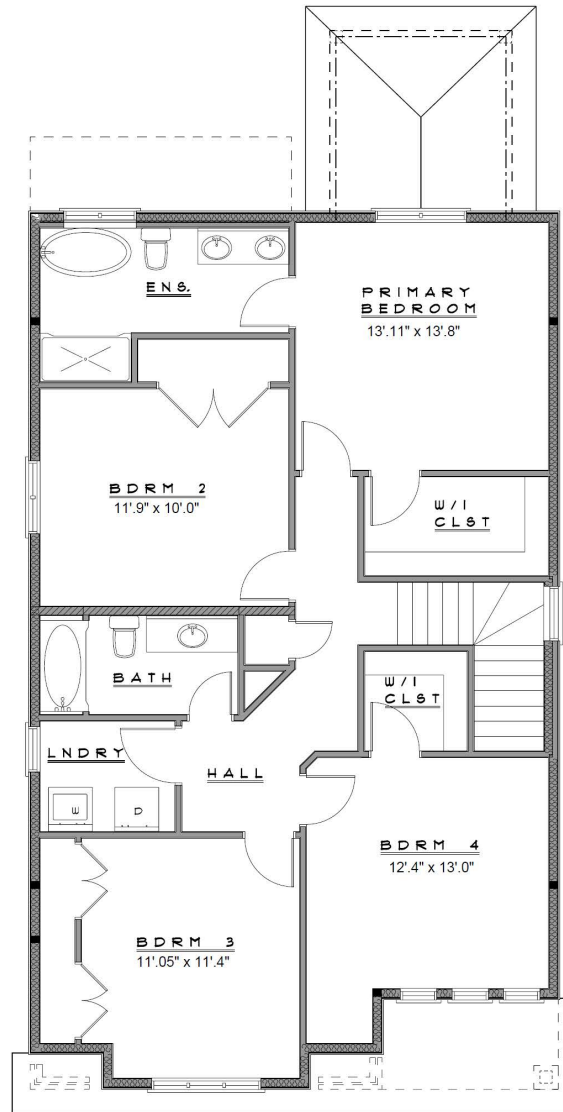
LOT 14 DETACHED



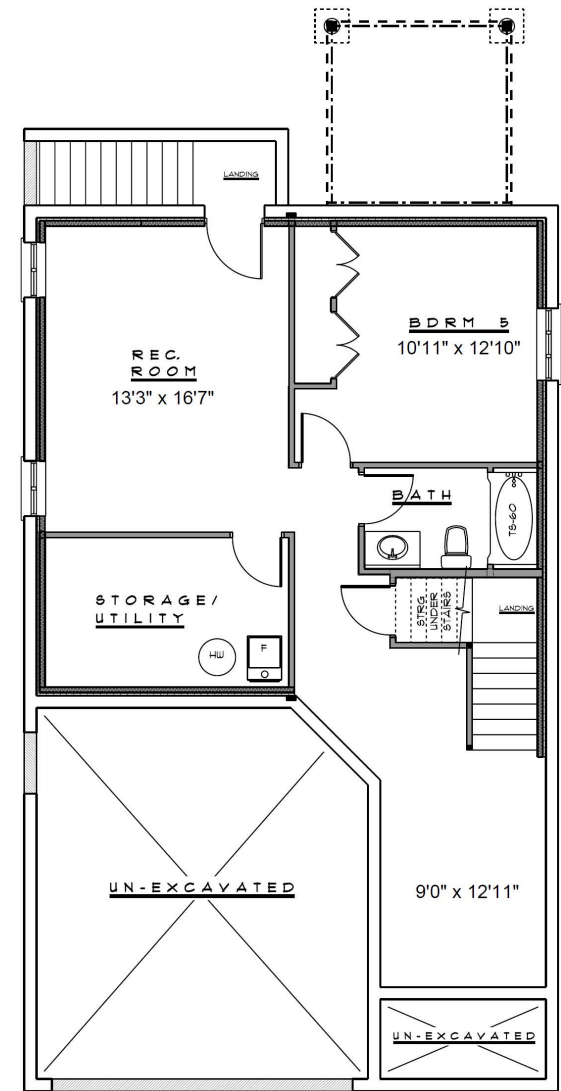
Total finished area 2956 sqft.
 2193 sqft. + 763 sqft. of finished basement



MAIN FLOOR



SECOND FLOOR



FINISHED BASEMENT

ElviraWayEstates - LOT 14

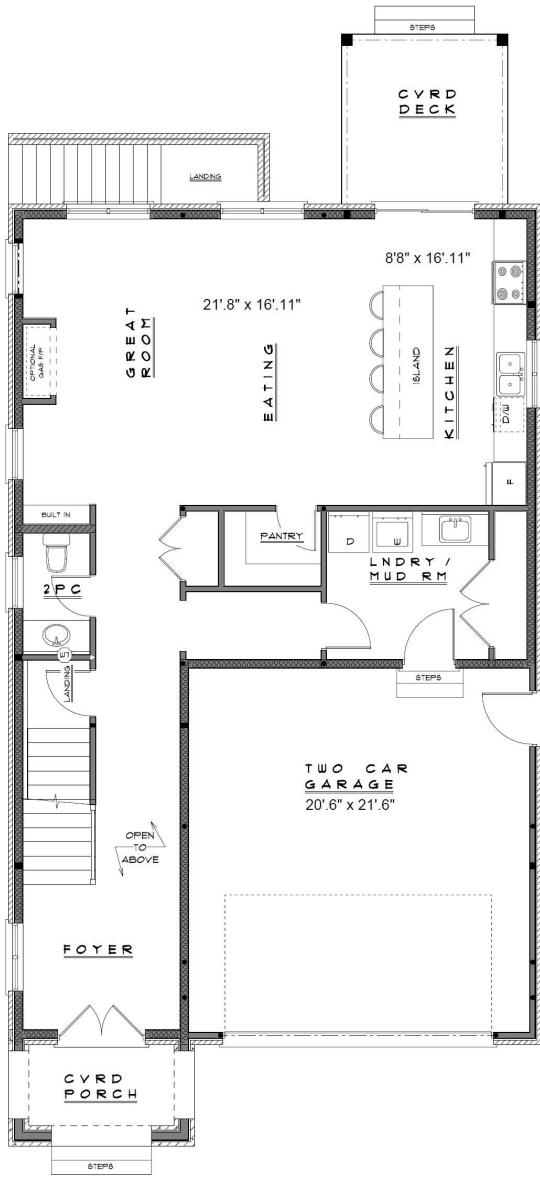
MARKEN HOMES

DIMENSIONS & LAYOUTS ARE APPROXIMATE, MAY VARY, AND ARE SUBJECT TO CHANGE. PLANS MAY BE REVERSED. ILLUSTRATIONS ARE ARTIST'S CONCEPT. E.&O.E.

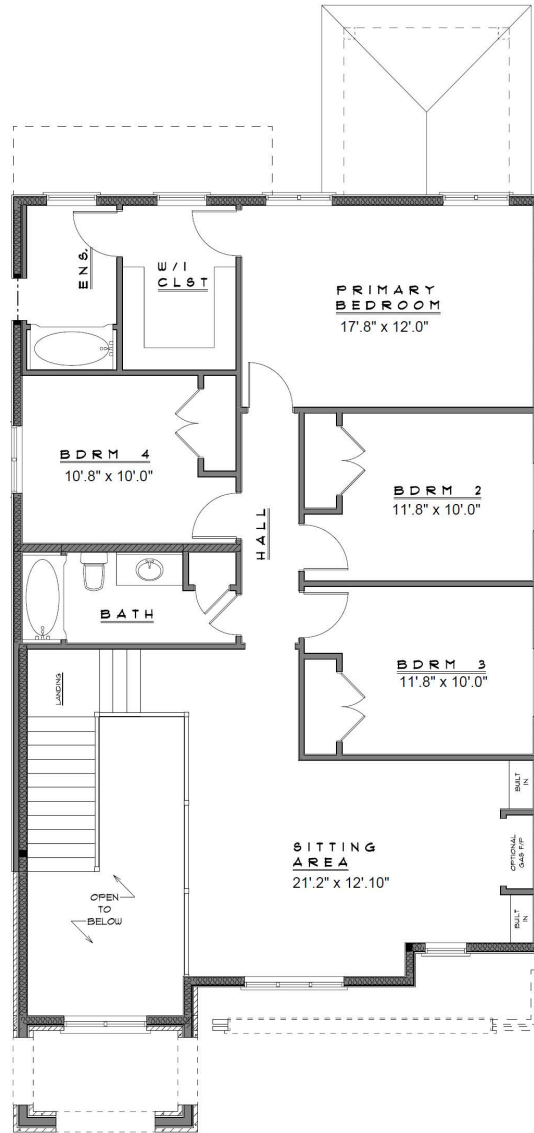
LOT 15 DETACHED



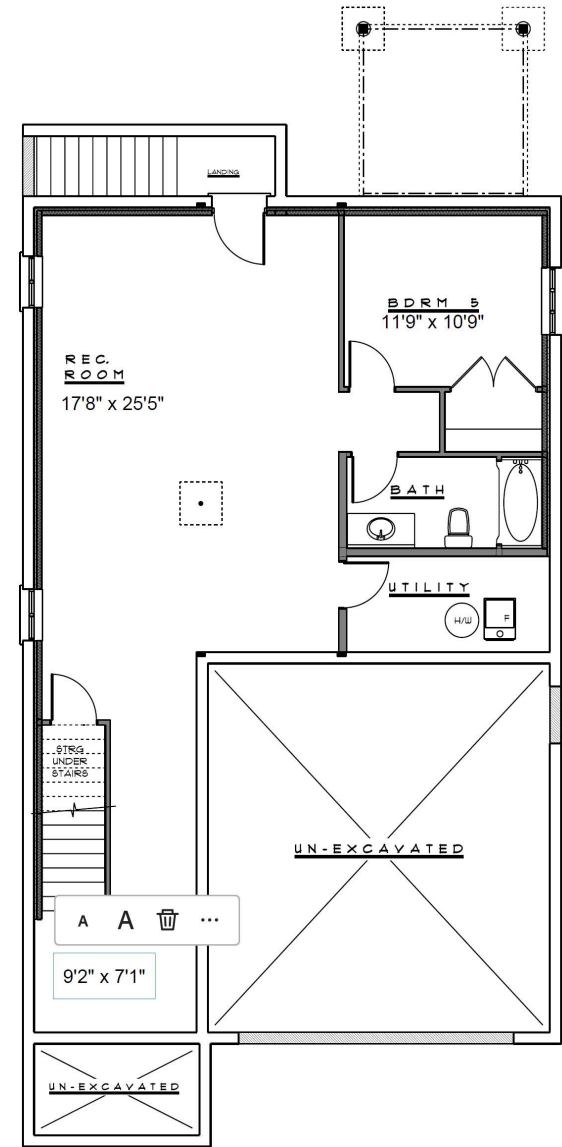
Total finished area 3313 sqft.
 2335 sqft. + 978 sqft. of finished basement



MAIN FLOOR



SECOND FLOOR

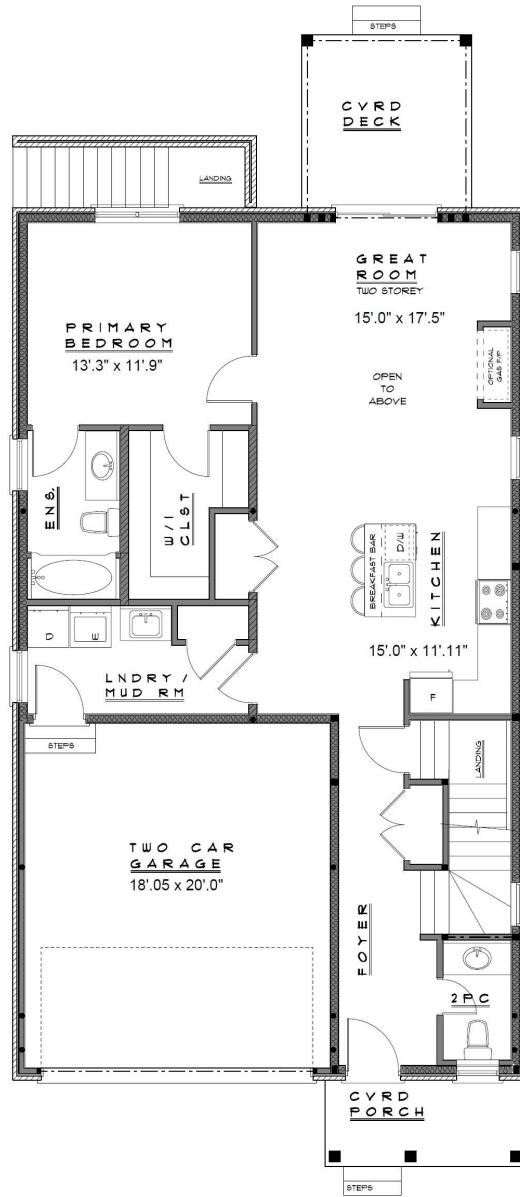


FINISHED BASEMENT

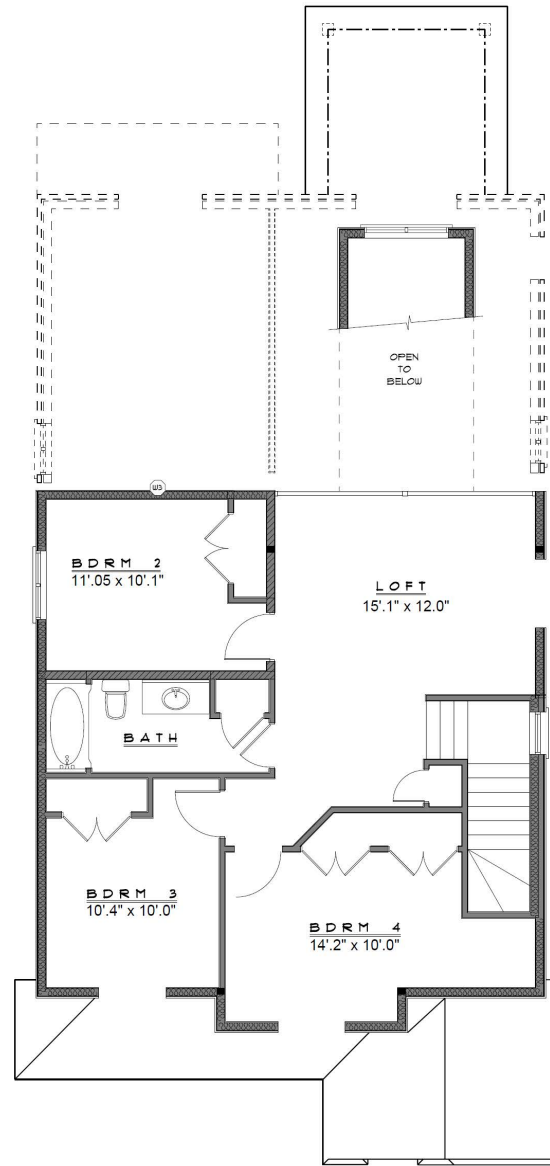
LOT 16 DETACHED



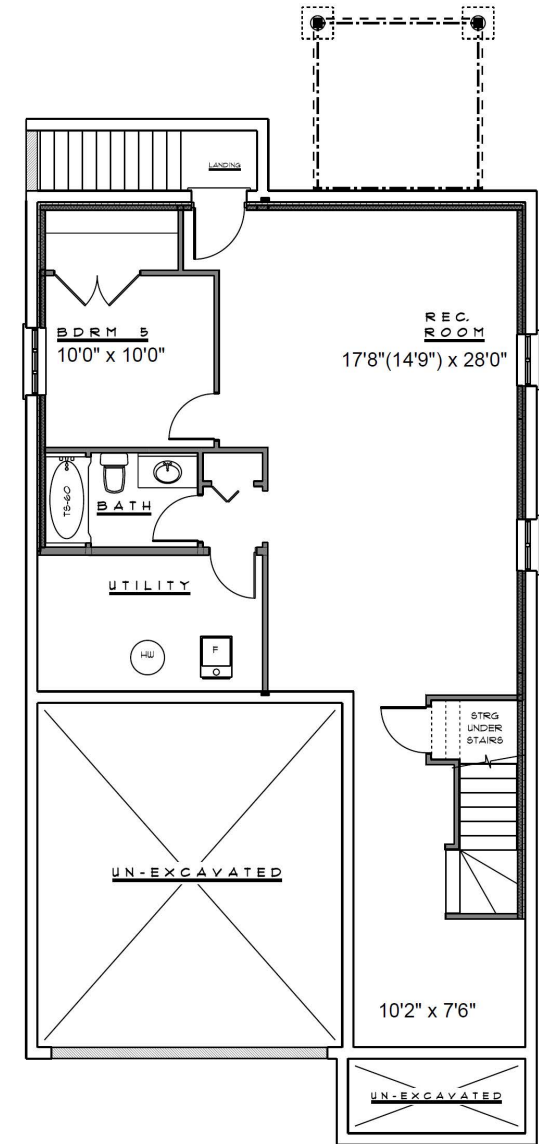
Total finished area 2917 sqft.
 1929 sqft. + 988 sqft. of finished basement



MAIN FLOOR



SECOND FLOOR



FINISHED BASMENT

Elvira Way Estates - LOT 16

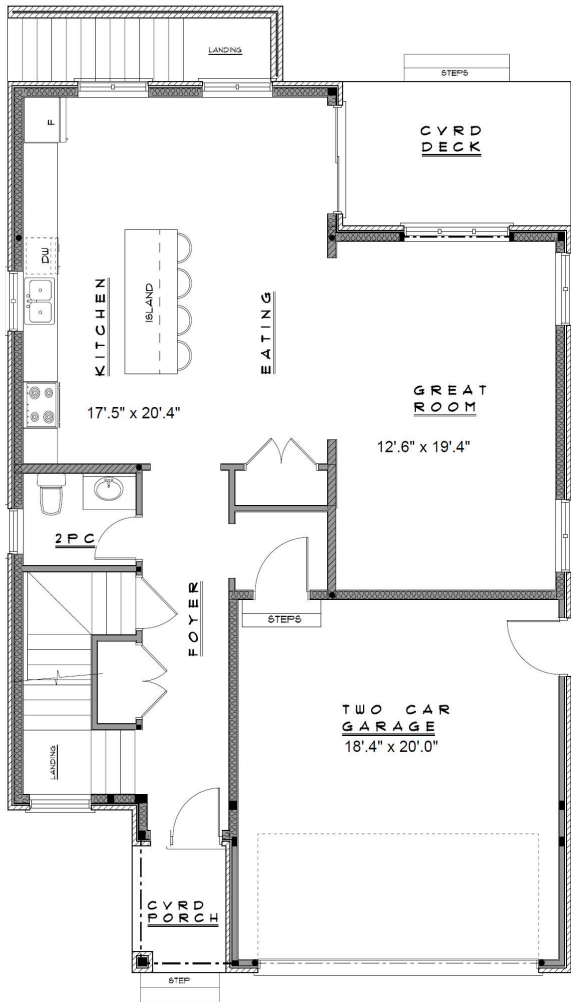
MARKEN HOMES

DIMENSIONS & LAYOUTS ARE APPROXIMATE, MAY VARY, AND ARE SUBJECT TO CHANGE. PLANS MAY BE REVERSED. ILLUSTRATIONS ARE ARTIST'S CONCEPT. E.&O.E.

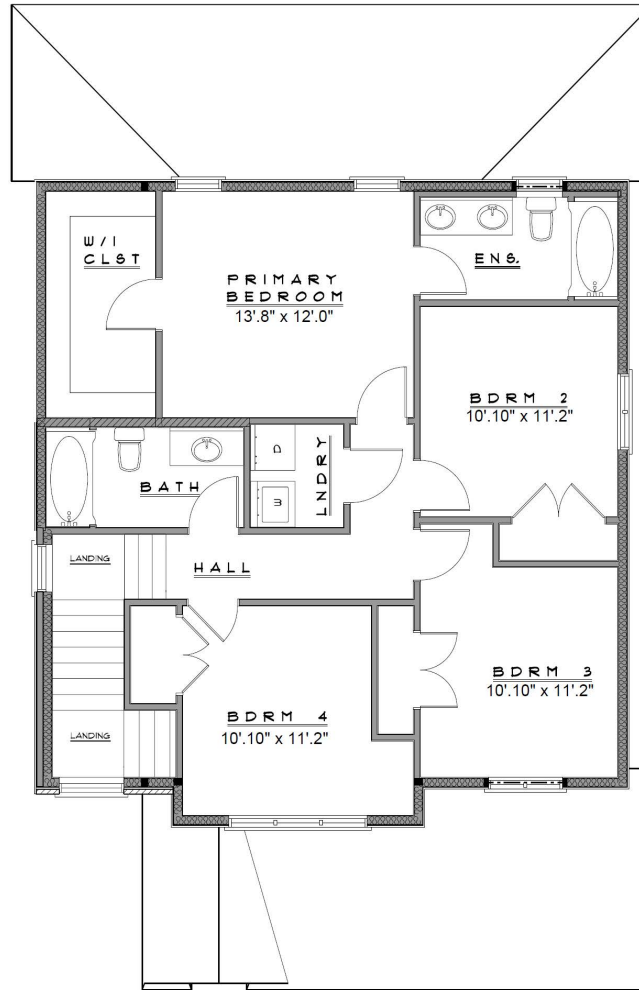
LOT 17 DETACHED



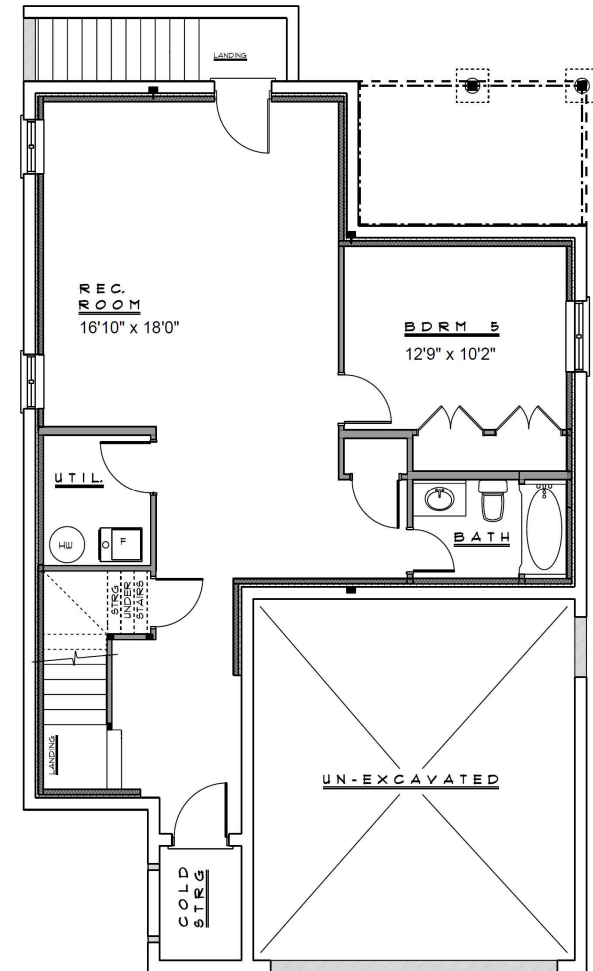
Total finished area 2695 sqft.
1880 sqft. + 815 sqft. of finished basement



MAIN FLOOR



SECOND FLOOR



FINISHED BASEMENT

Elvira Way Estates - LOT 17

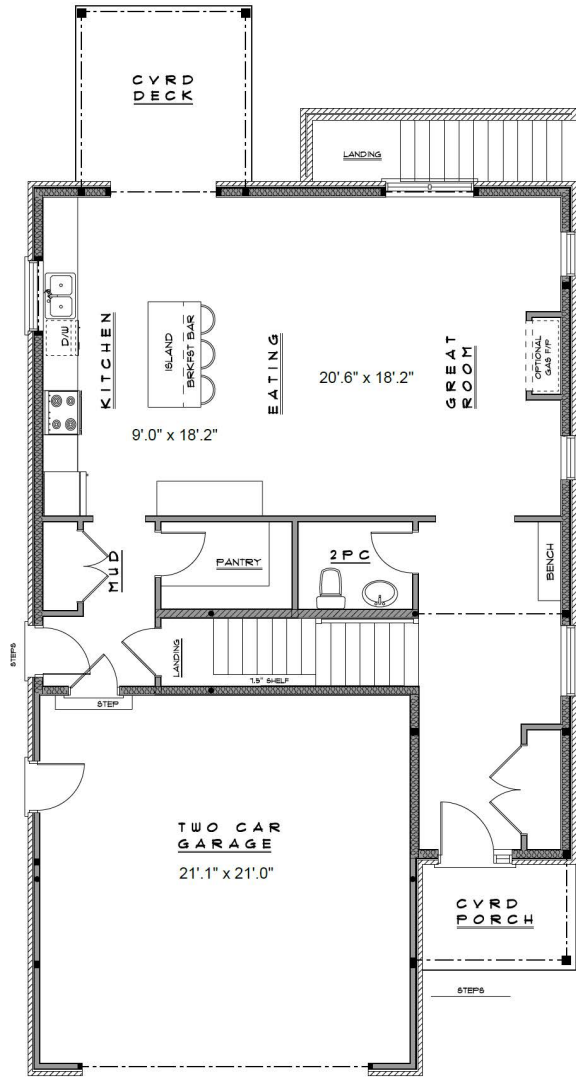
MARKEN HOMES

DIMENSIONS & LAYOUTS ARE APPROXIMATE, MAY VARY, AND ARE SUBJECT TO CHANGE. PLANS MAY BE REVERSED. ILLUSTRATIONS ARE ARTIST'S CONCEPT. E.&O.E.

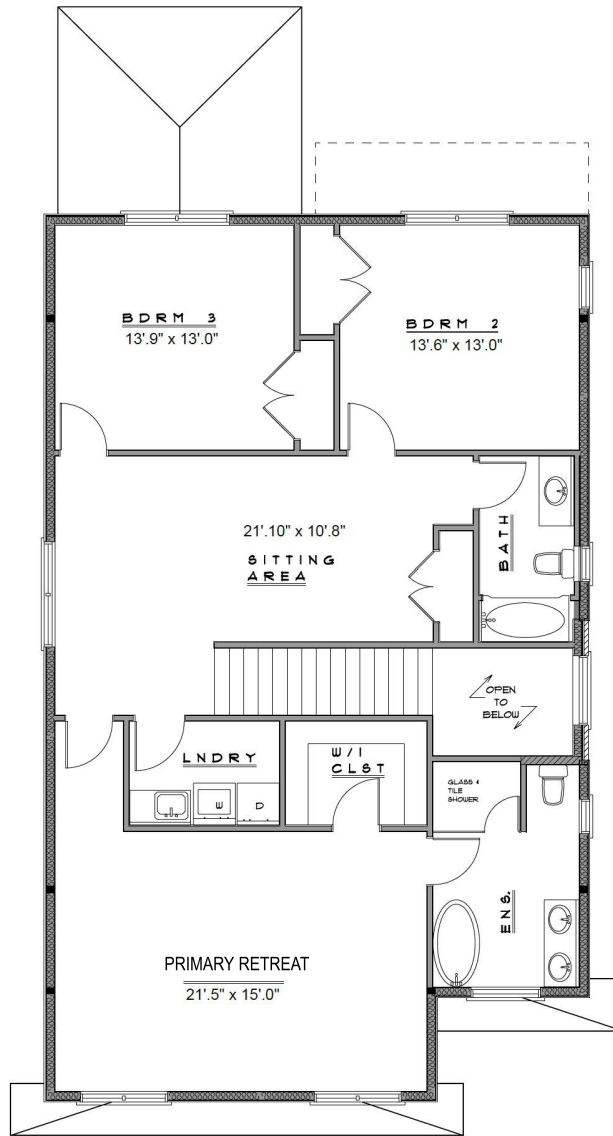
LOT 18 DETACHED



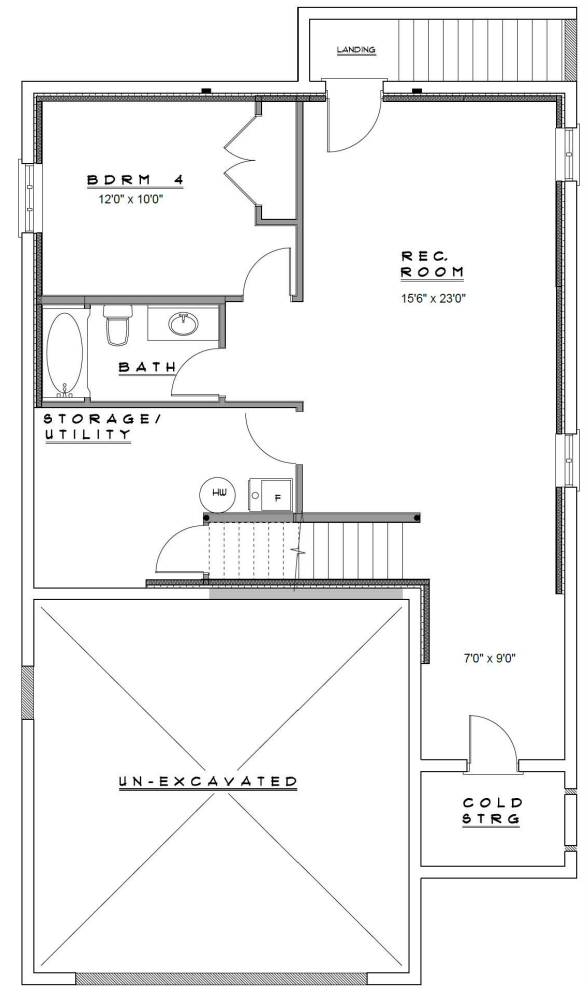
Total finished area 3155 sqft.
 2450 sqft. + 705 sqft. of finished basement



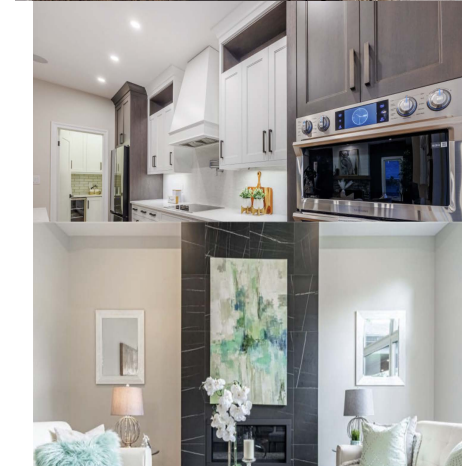
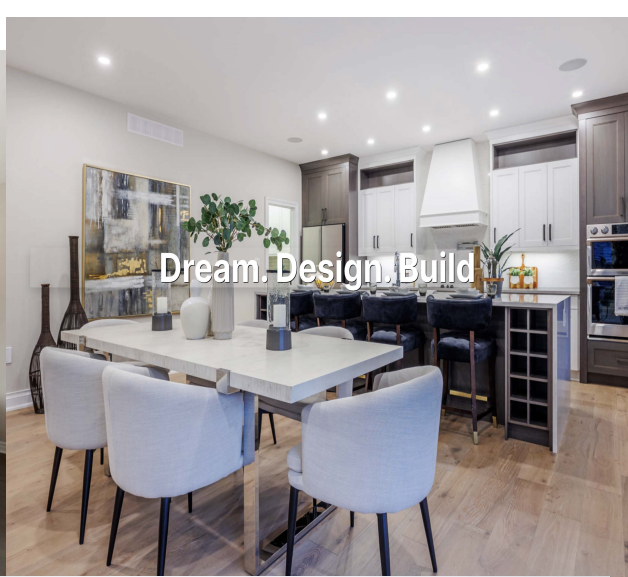
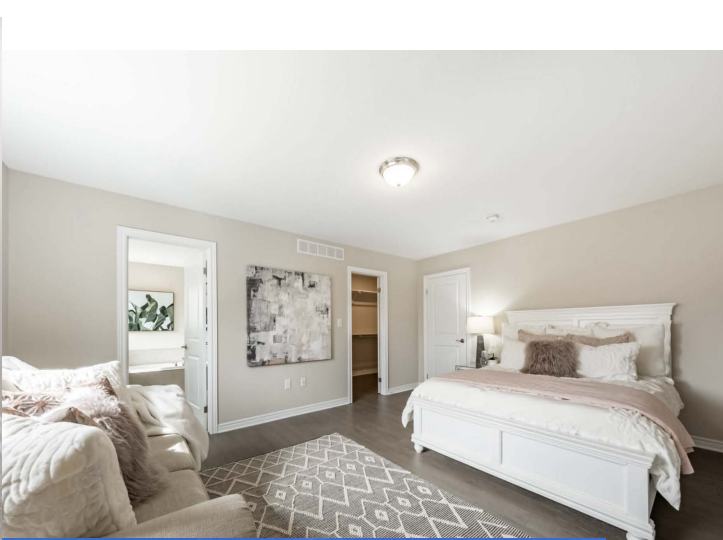
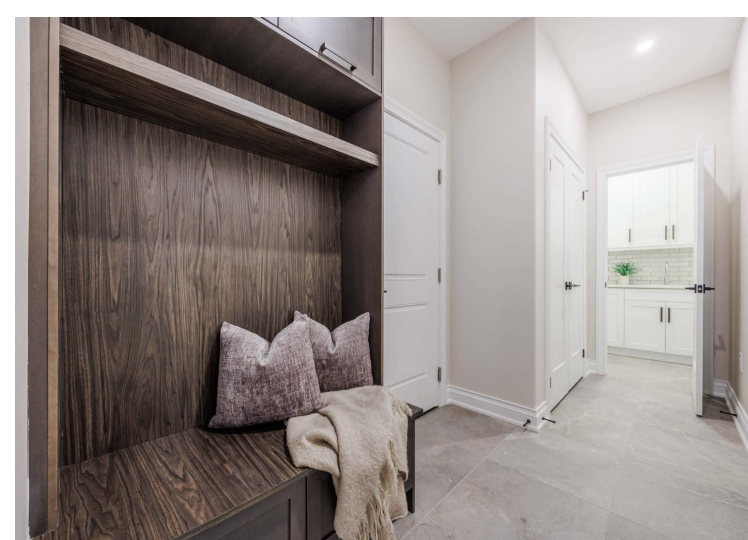
MAIN FLOOR



SECOND FLOOR



FINISHED BASEMENT



Photos are from past completed projects by Markon Homes

*Some of our work
in the past.....*



MARKEN HOMES
Dream. Design. Build



Photos are from past completed projects by Marken Homes

WHY THOROLD?

THOROLD RANKS AS 8TH FASTEST GROWING MUNICIPALITY IN THE COUNTRY

Thorold is booming with growth.

The city ranking as the 8th fastest growing municipality in the country as Statistics Canada released data from the 2021 census.

A 26.7% population boost over five years vaulted them into the top 10.

The increase places Thorold 4th in the province when it comes to population growth.

According to the data released the city now has a population of 23,816, up from 18,807 back in 2016.

They also saw a 21.8% jump in occupied homes over that same time frame.

Welcome to the small City that lives to the beat of its own rhythm- A little bluesy and a whole lot of friendly.

Thorold, Ontario is one of Canada's most historic cities and is home to the famous Twin Flight Locks. Rich in history and spread over approximately 8,490 hectares (21,000 acres) of residential, agricultural, commercial and industrial land, it is the perfect place to visit and call home.

Thorold is the proud recipient of the Prince of Wales Prize for Municipal Heritage, awarded by the National Trust of Canada. Thorold is centrally located within the Niagara Region. It is conveniently located 30 minutes from the Hamilton Airport, 40 minutes from the Buffalo, New York USA International Airport and 1 hour from Pearson International Airport in Toronto.