



An Exclusive Enclave of Exquisitely Crafted Bungalow TownHomes

Welland

Known for an abundance of parks, a low crime rate and a variety of living choices, Welland is a safe and affordable place to live, work and raise a family. Key Features: Region's largest French Canadian community; recreational waterway and flatwater (paddling sports) centre; known as the Rose City.

MARKEN HOMES



An Exclusive Enclave of Exquisitely Crafted Bungalow TownHomes

Artistic Concept.

EXISTING RESIDENTIAL

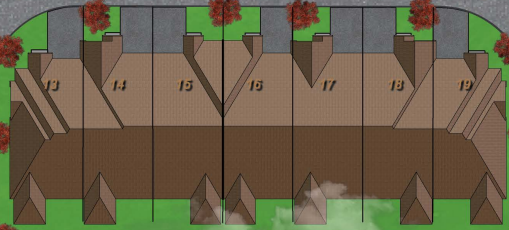
CITY OF THOROLD
CITY OF WELLAND

CITY OF THOROLD
CITY OF WELLAND

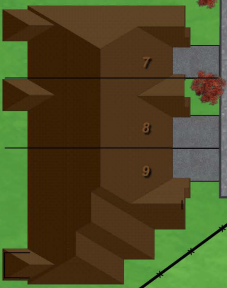
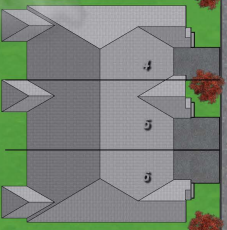
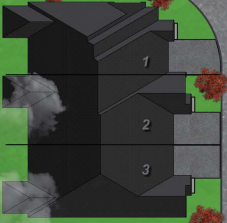
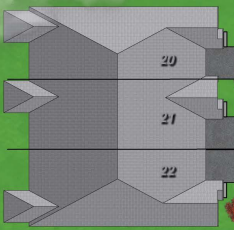
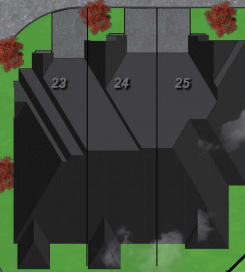


MONTROSE TRAIL

MONTROSE TRAIL



PORTAGE TRAIL



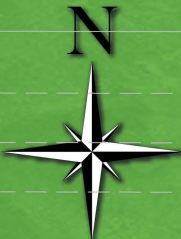
WILEY TRAIL

HANSLER ROAD

EXISTING RESIDENTIAL

TOWPATH ROAD

QUAKER ROAD



Artistic Concept. Sizes and specifications are subject to change without notice. E.&O.E.

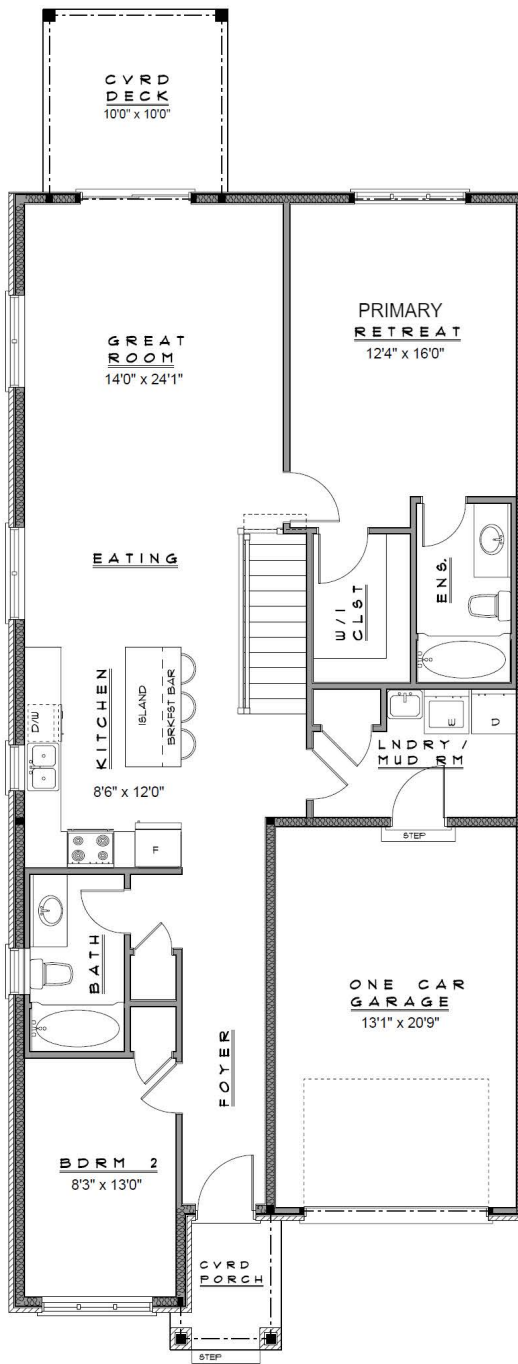
An Exclusive Enclave of Exquisitely Crafted Bungalow TownHomes



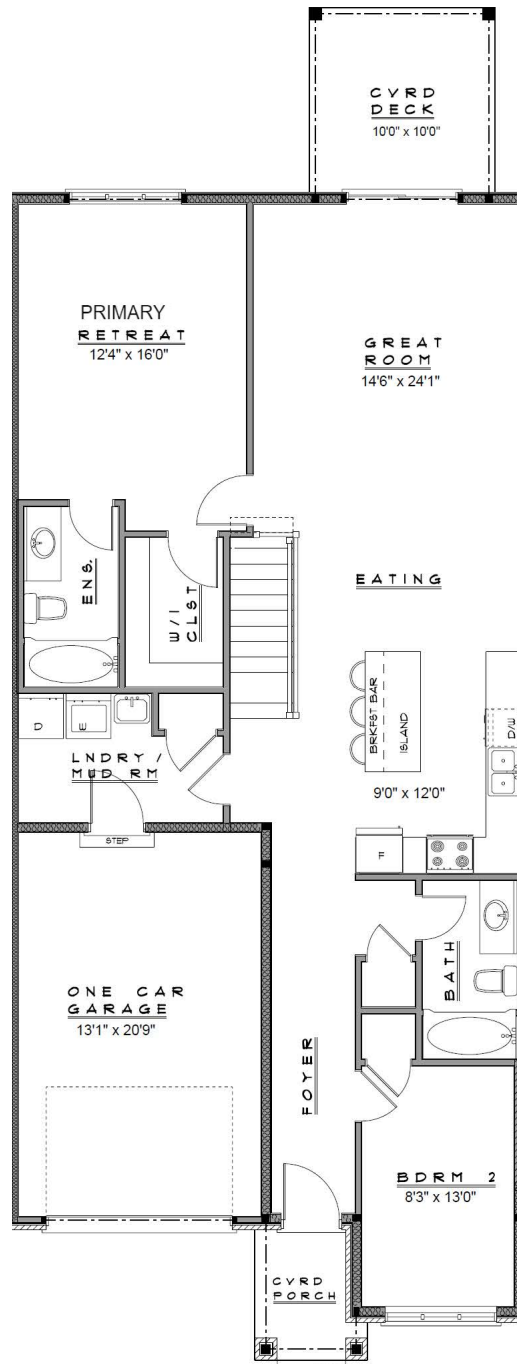
TH-3 (END)

TH-2 (INTERIOR)

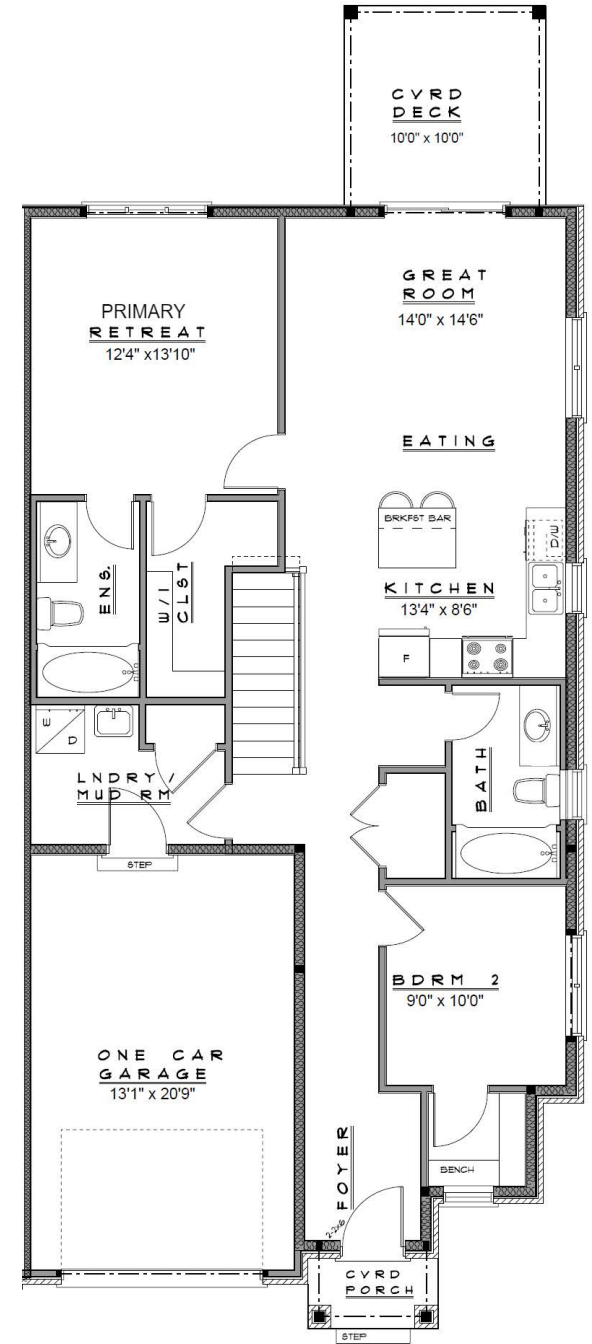
TH-1 (CORNER)



TH-3 (1316 sqft)



TH-2 (1316 sqft)



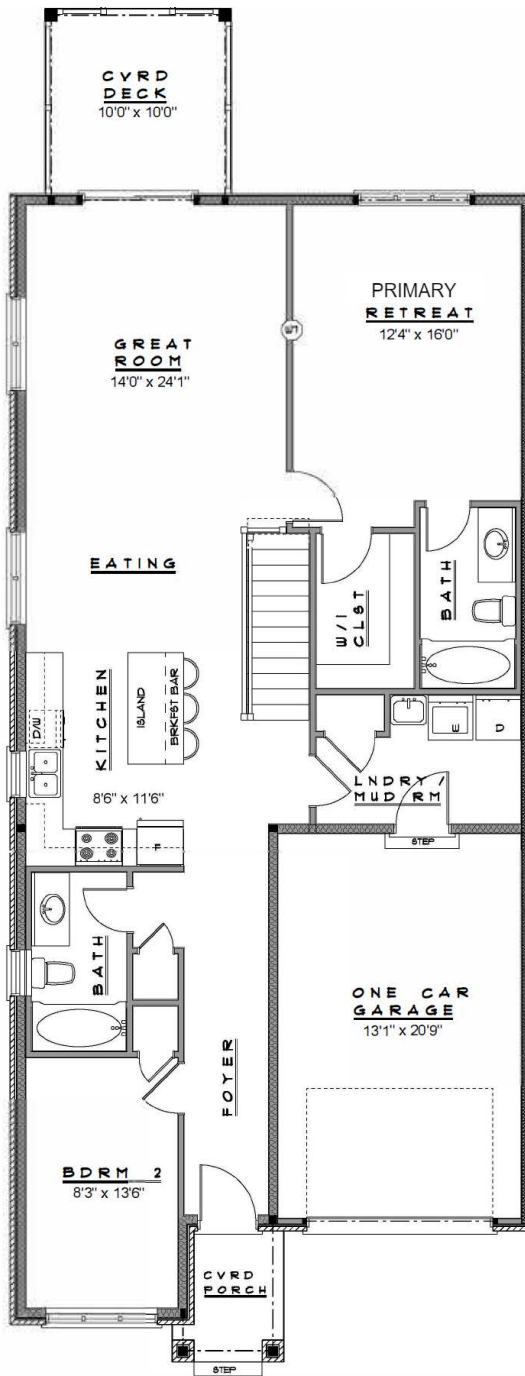
TH-1 (1150 sqft)



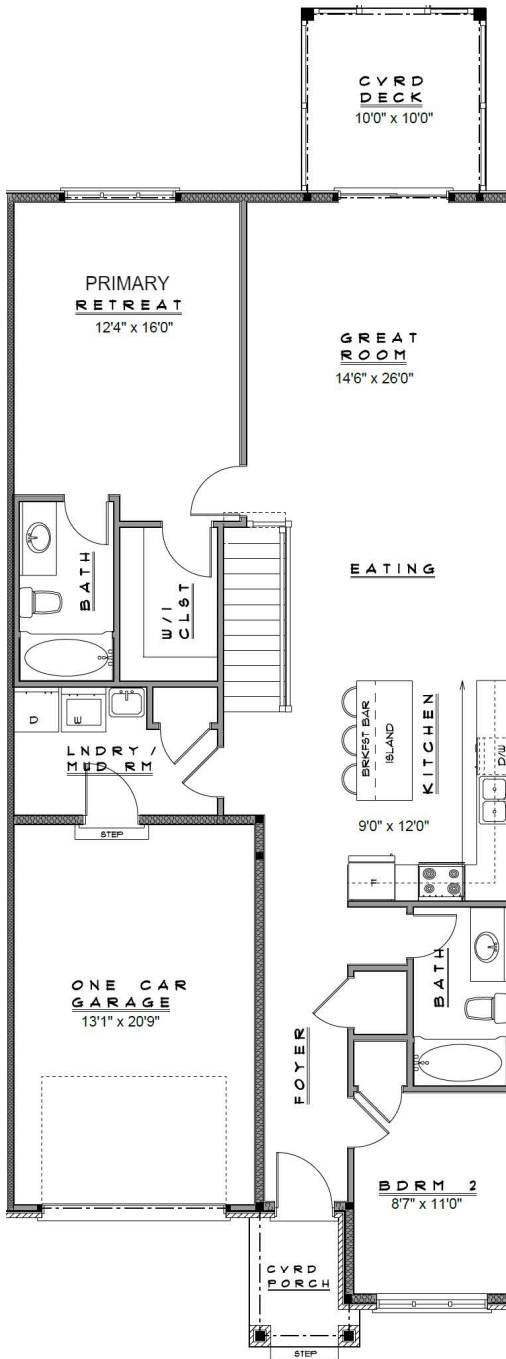
TH-6 (END)

TH-5 (INTERIOR)

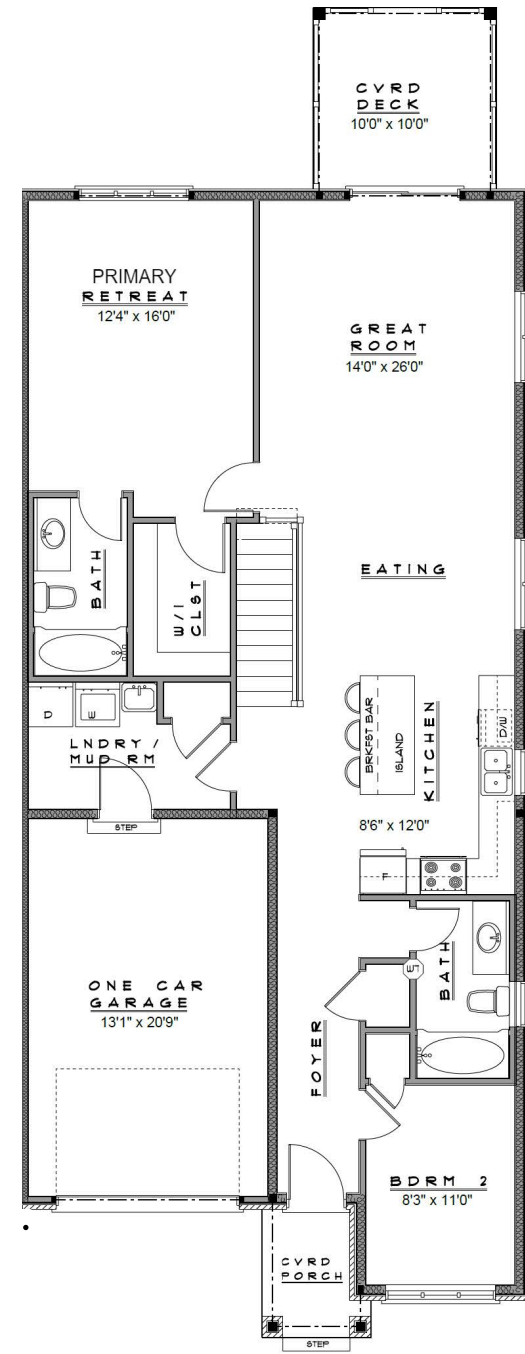
TH-4 (END)



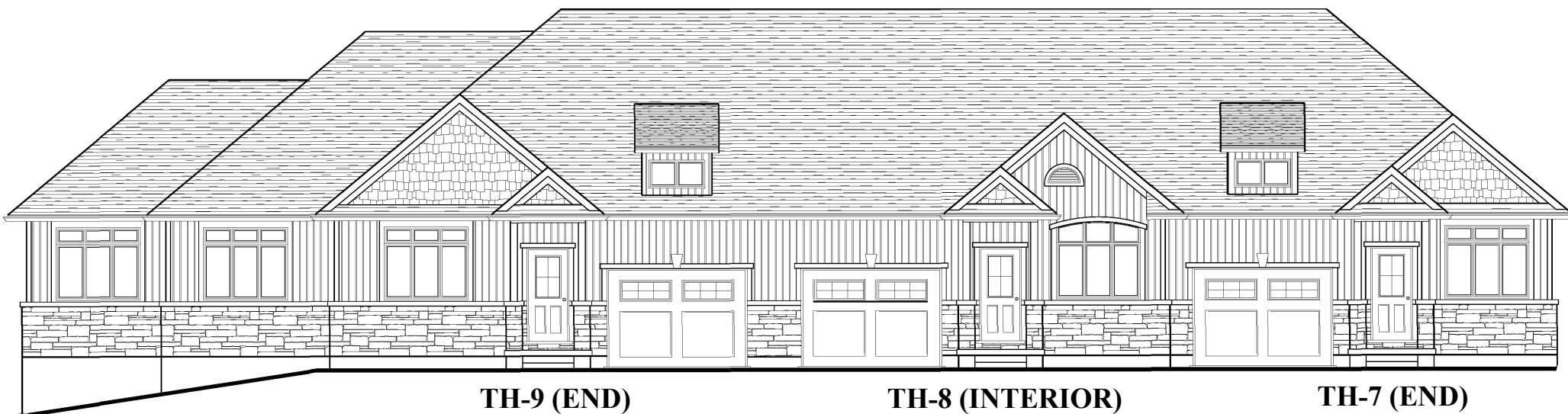
TH-6 (1293 sqft)



TH-5 (1308 sqft)



TH-4 (1293 sqft)

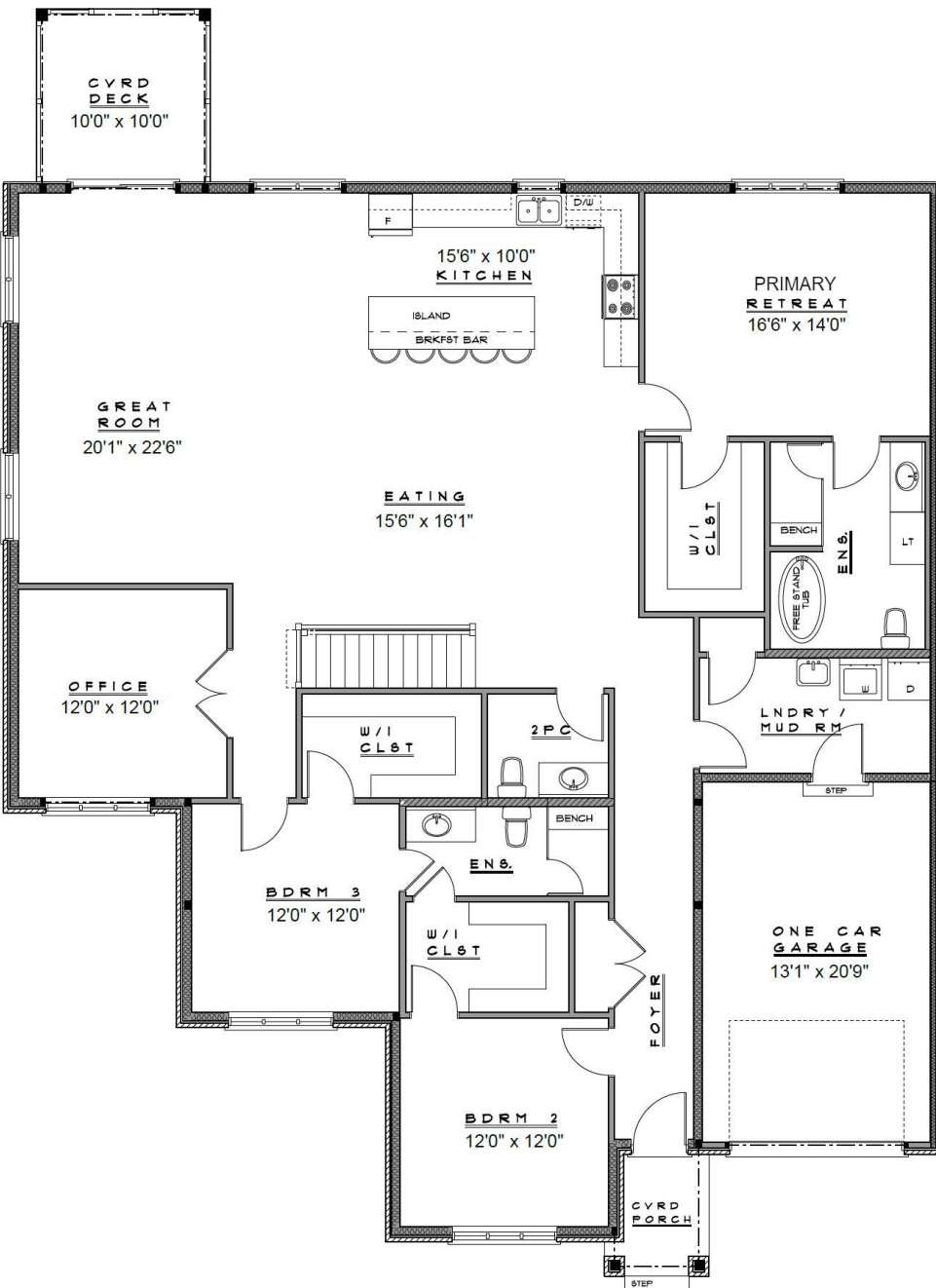


TH-9 (END)

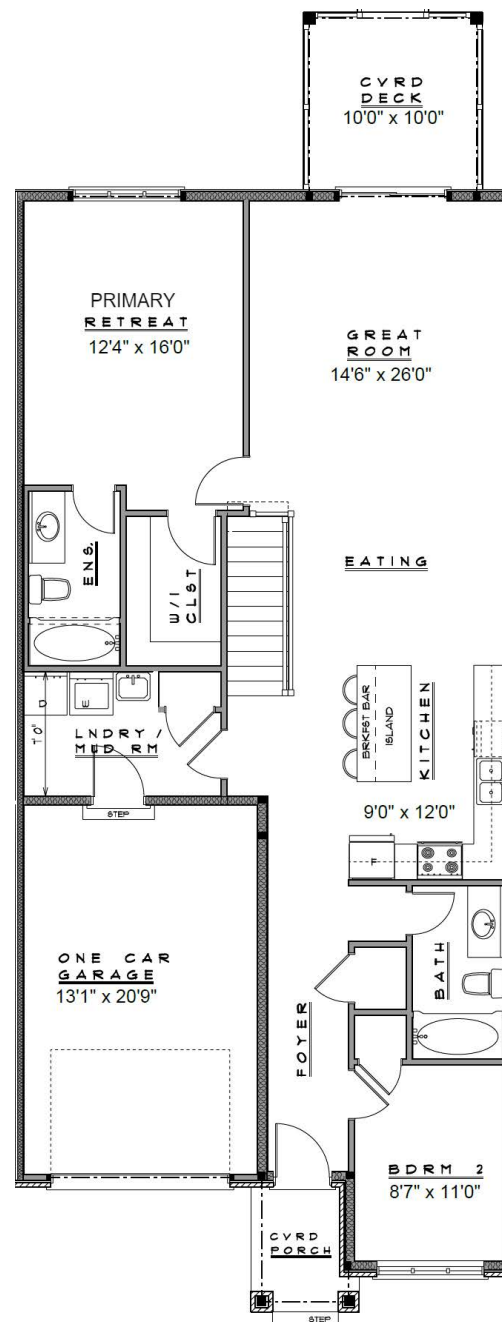
TH-8 (INTERIOR)

TH-7 (END)

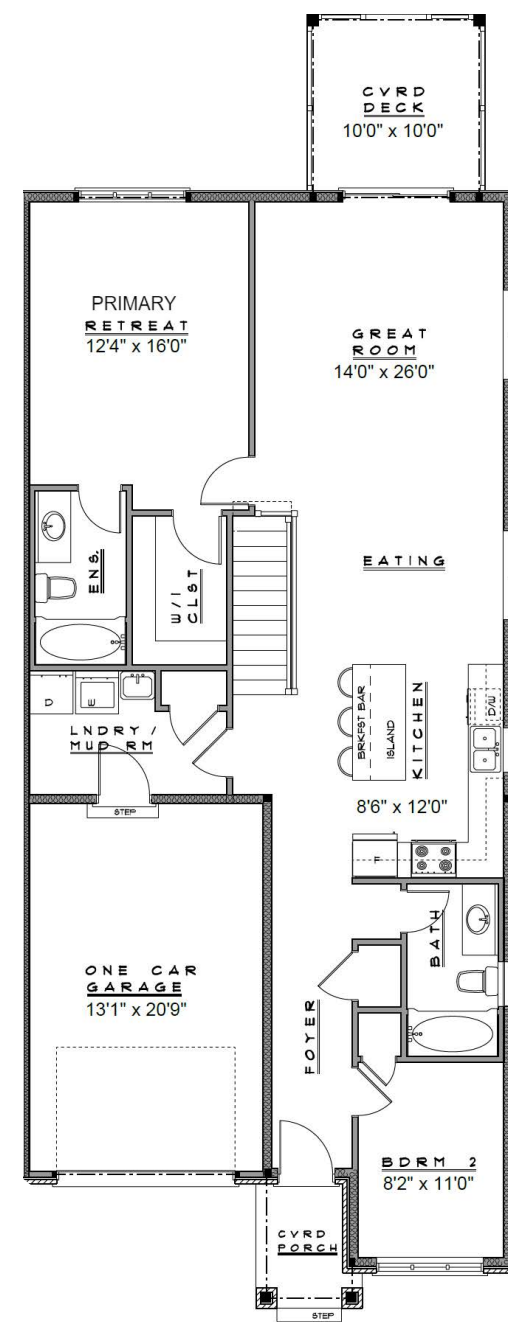
FLOORPLAN



TH-9 (2455 sqft)



TH-8 (1308 sqft)



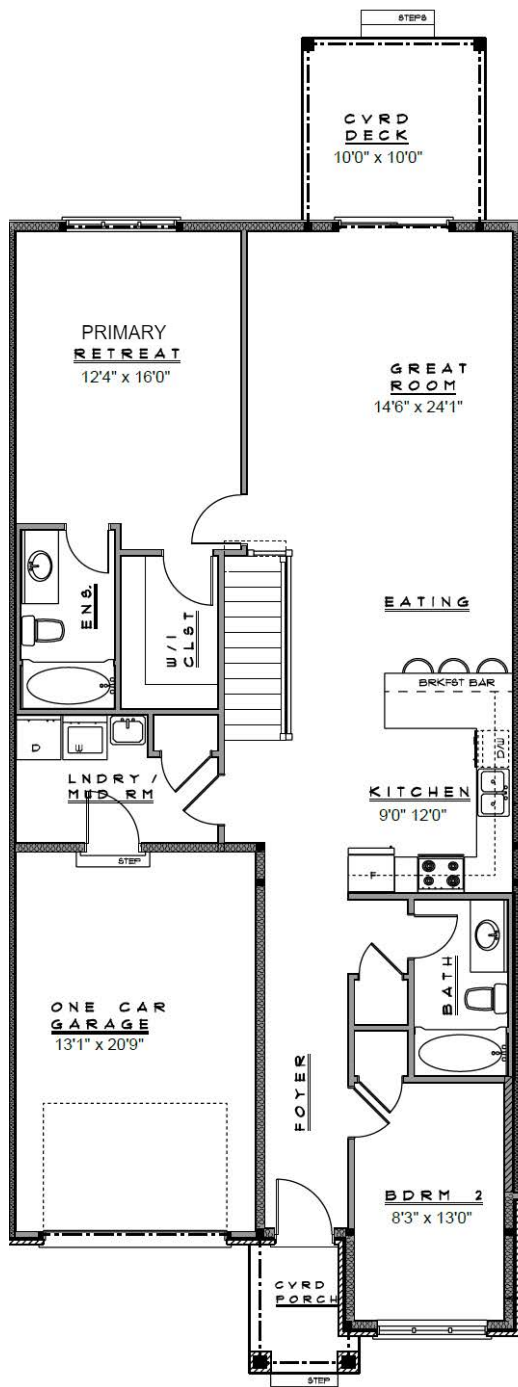
TH-7 (1293 sqft)



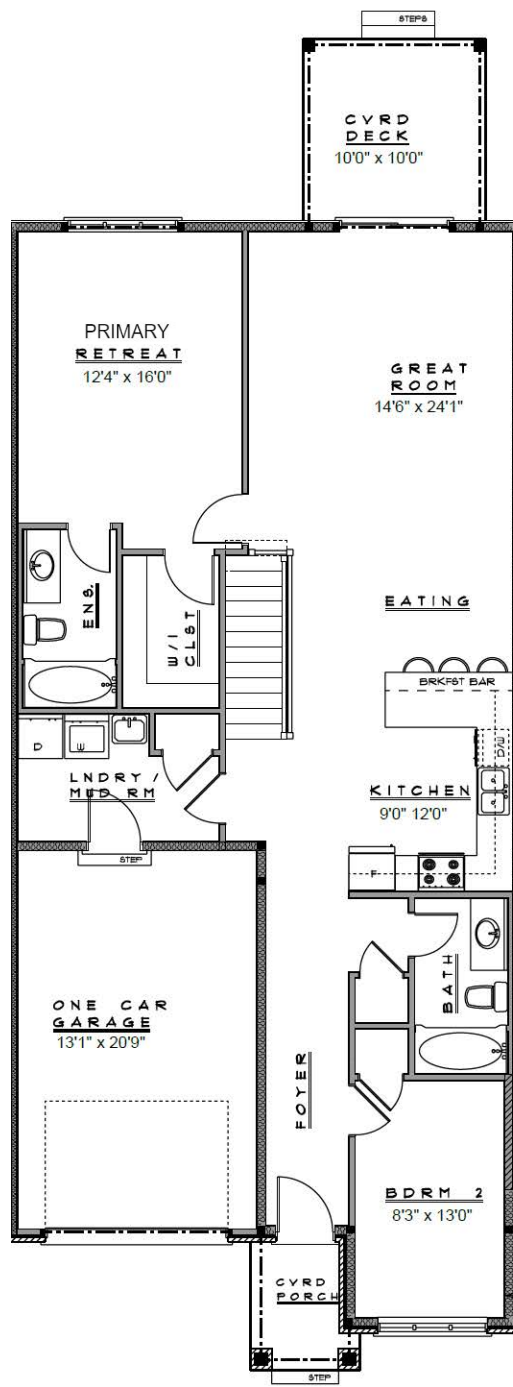
TH-15 (INTERIOR)

TH-14 (INTERIOR)

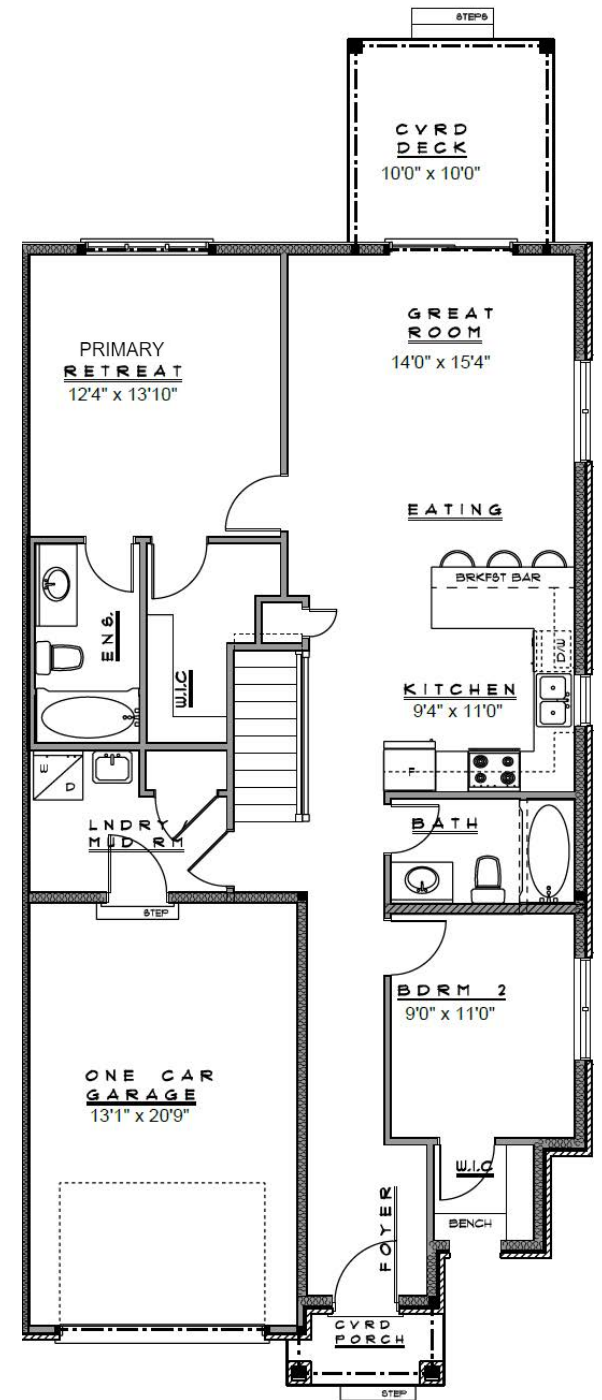
TH-13 (CORNER)



TH-15 (1308 sqft)



TH-14 (1308 sqft)



TH-13 (1160 sqft)

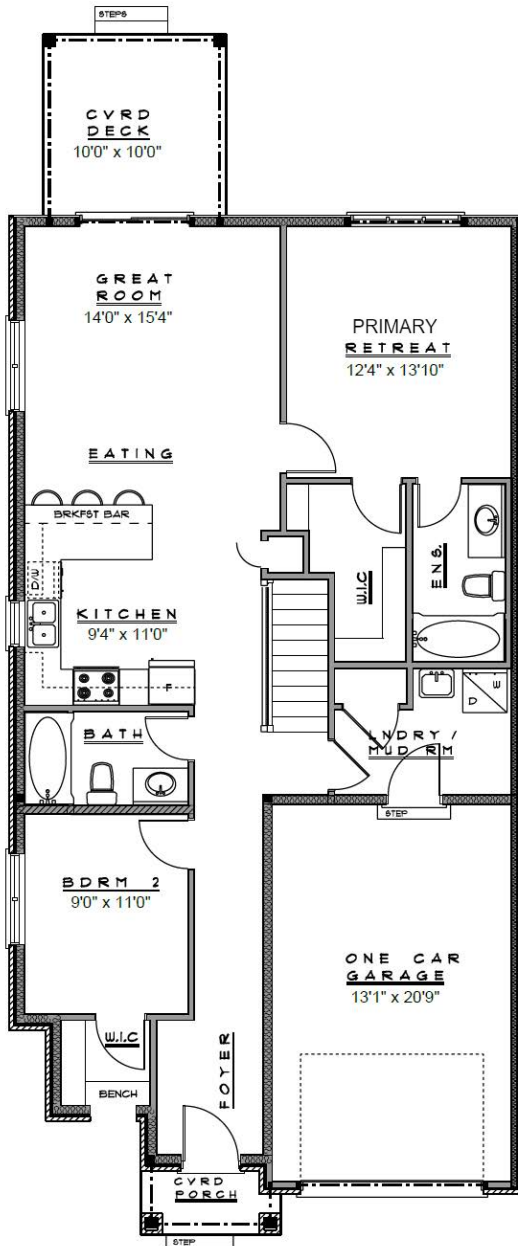


TH-19 (CORNER)

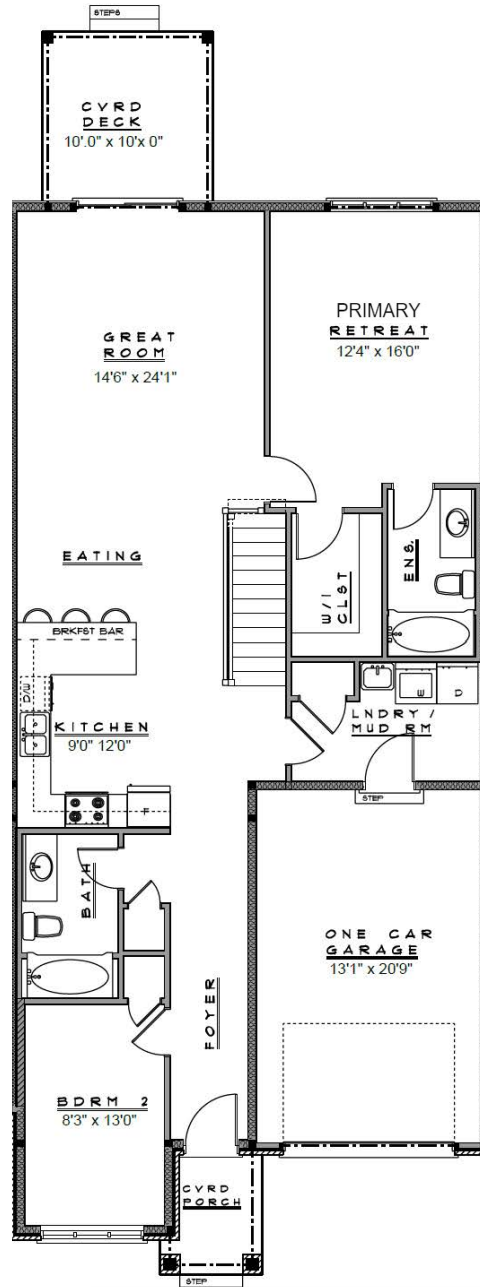
TH-18 (INTERIOR)

TH-17 (INTERIOR)

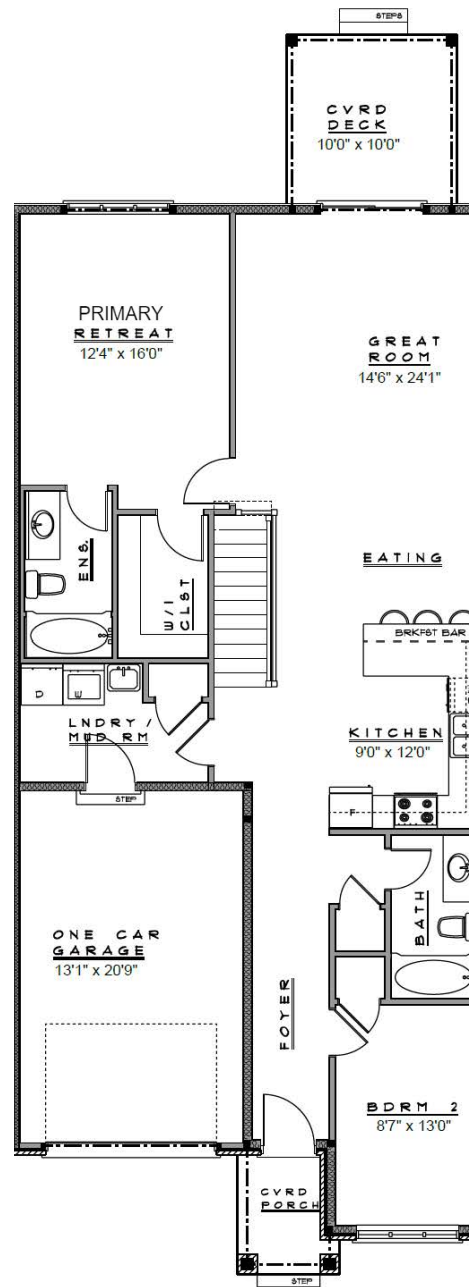
TH-16 (INTERIOR)



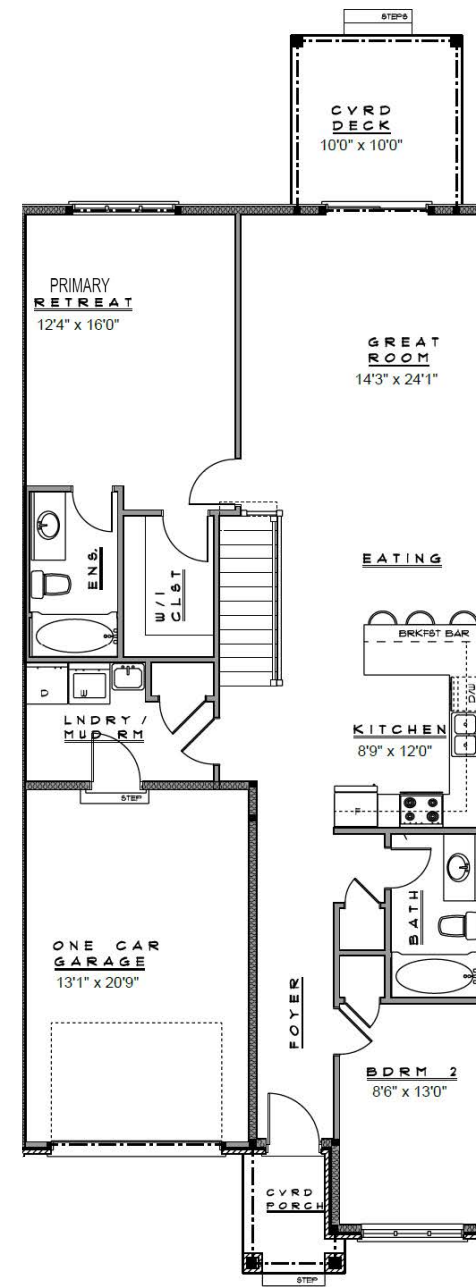
TH-19 (1160 sqft)



TH-18 (1308 sqft)



TH-17 (1308 sqft)



TH-16 (1293 sqft)

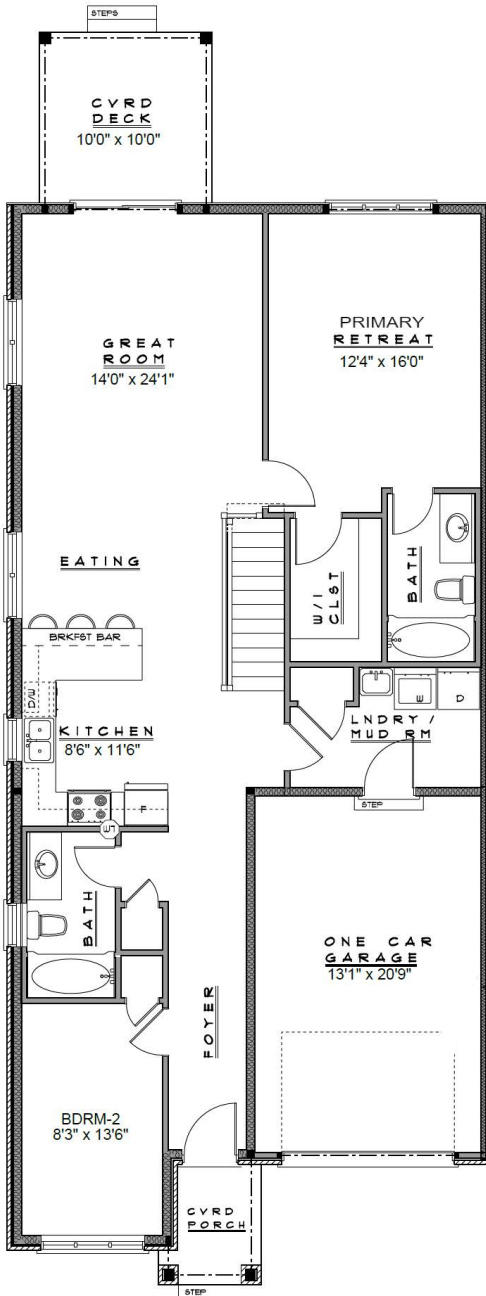


TH-43 (CORNER)

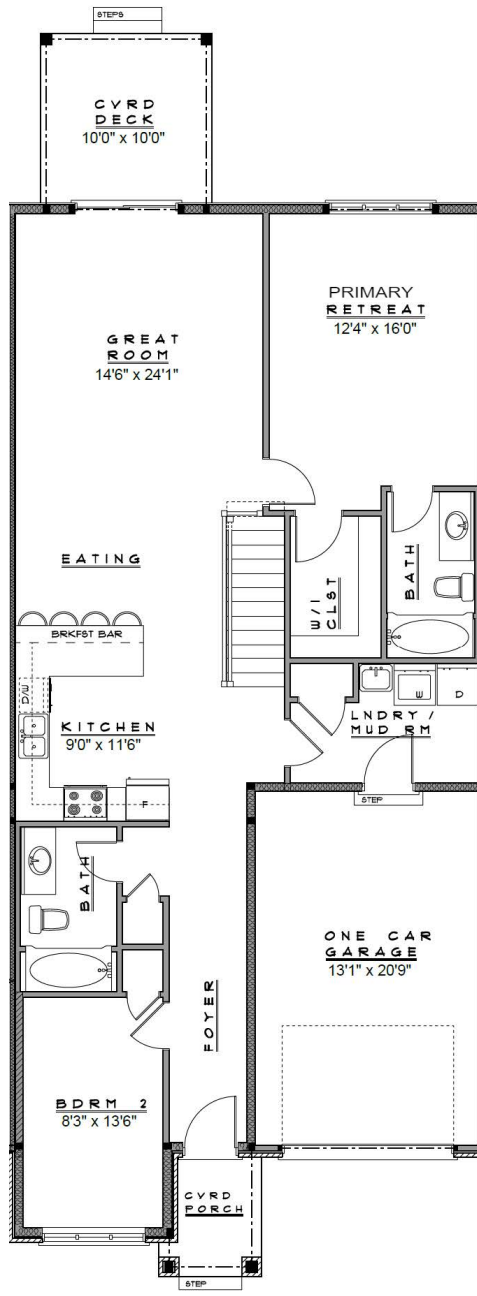
TH-42 (INTERIOR)

TH-41 (INTERIOR)

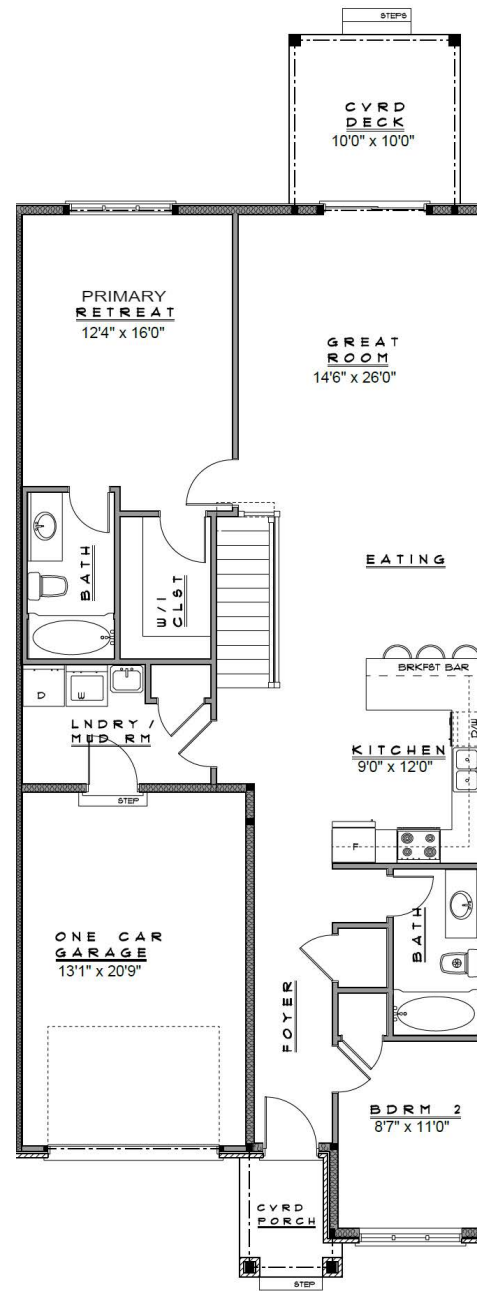
TH-40 (END)



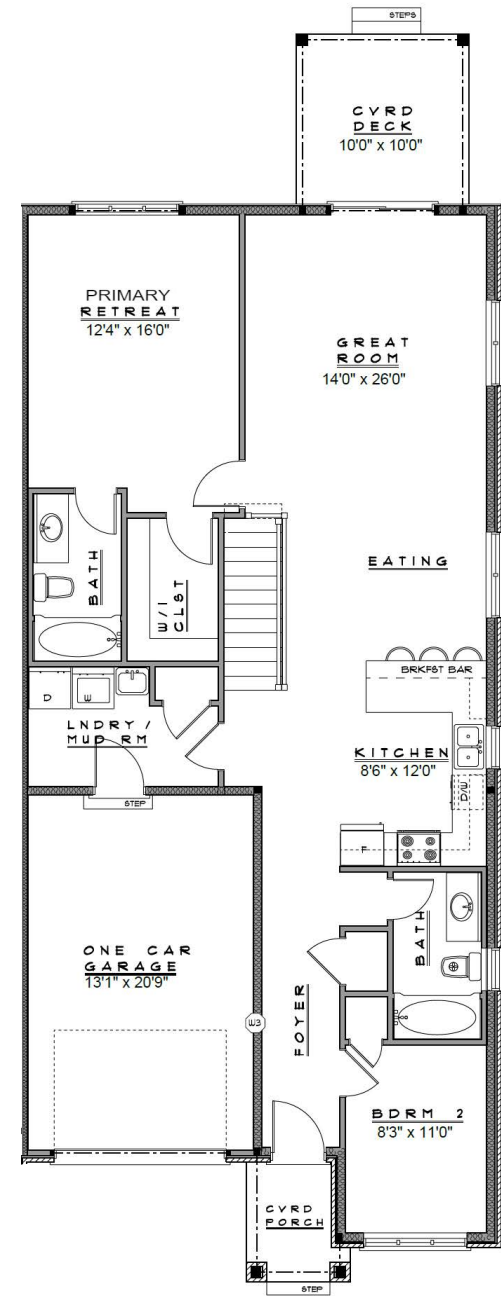
TH-43 (1316 sqft)



TH-42 (1316 sqft)



TH-41 (1316 sqft)



TH-40 (1316 sqft)



Dream. Design. Build



*Photo is from Meadowvale Estates St. Catharines
Past completed project by Marken Homes*



Known for an abundance of parks, a low crime rate and a variety of living choices, Welland is a safe and affordable place to live, work and raise a family. Key Features: Region's largest French Canadian community; recreational waterway and flatwater (paddling sports) centre; known as the **Rose City**.

Top Attractions in Welland



The Welland Canal



Merrit Island



Welland Farmers Market



Welland Bridge 13



Chippawa Park



Welland International Flatwater Centre



Welland Museum



Battle Of Cooks Mills National Historic Site



Memorial Park



Welland Public Library



Maple Park Pool



Faith Welland

MARKEN HOMES

For over two decades, Marken Homes has been a symbol of excellence in the Niagara region consistently dedicated to crafting luxurious homes for families.

We are thrilled to unveil our latest project, a prestigious enclave nestled in the Prime Location of Welland.

This remarkable location is embraced by contemporary amenities, educational institutions of the highest caliber, and direct access to highway 406.

Our latest meticulously planned community stands as a testament to our unwavering commitment to excellence. Here, you will discover an array of extraordinary Bungalow TownHomes.

Join us in forging a new chapter of unparalleled elegance and make Hansler Village your proud and distinguished home...