

# CHARMING & THOROUGHLY MODERN



## 29 Glendon Road, Woods Hole, MA

**Price:** \$818,000  
**Rooms:** Five  
**Bedrooms:** Three  
**Bathrooms:** Three Full / One Half  
**Living Area:** 2,400 sq ft  
**Assessment:** \$476,400 / 2019  
**Acres:** 0.21 Acres  
**Year Built:** 2006  
**Heating:** Natural Gas, Central A/C  
**Water:** Town  
**Sewer:** Private  
**Taxes:** \$4,077 / 2019

Nestled in Woods Hole within walking distance to MBL, the Shining Sea Bikeway and the village, sits this charming thoroughly modern Cape style home built in 2006. With a bright, airy and open floor plan, the home radiates warmth, sunshine and privacy. The living room with wood burning fireplace also offers a modern sleek gas fireplace and slider to access the extensive and private outdoor deck. The kitchen with banquette and beautiful cabinetry offers an efficient workspace. Gleaming wood floors flow from the main living spaces into the first floor master suite. A half bath with laundry and access to the garage complete this level. On the second level there are two spacious bedrooms, full bath with skylight and a cozy loft space that can be used for a small office or a place to curl up with a book. The walk out lower level provides great overflow space with living, dining and sleeping spaces and full bath. After a day in Woods Hole or the islands, come home and enjoy the peacefulness of the private back yard with mature trees and plants.

**RP** ROBERT PAUL  
PROPERTIES



*Leading* REAL ESTATE  
COMPANIES  
OF THE WORLD®

**LP** LUXURY  
PORTFOLIO  
INTERNATIONAL®

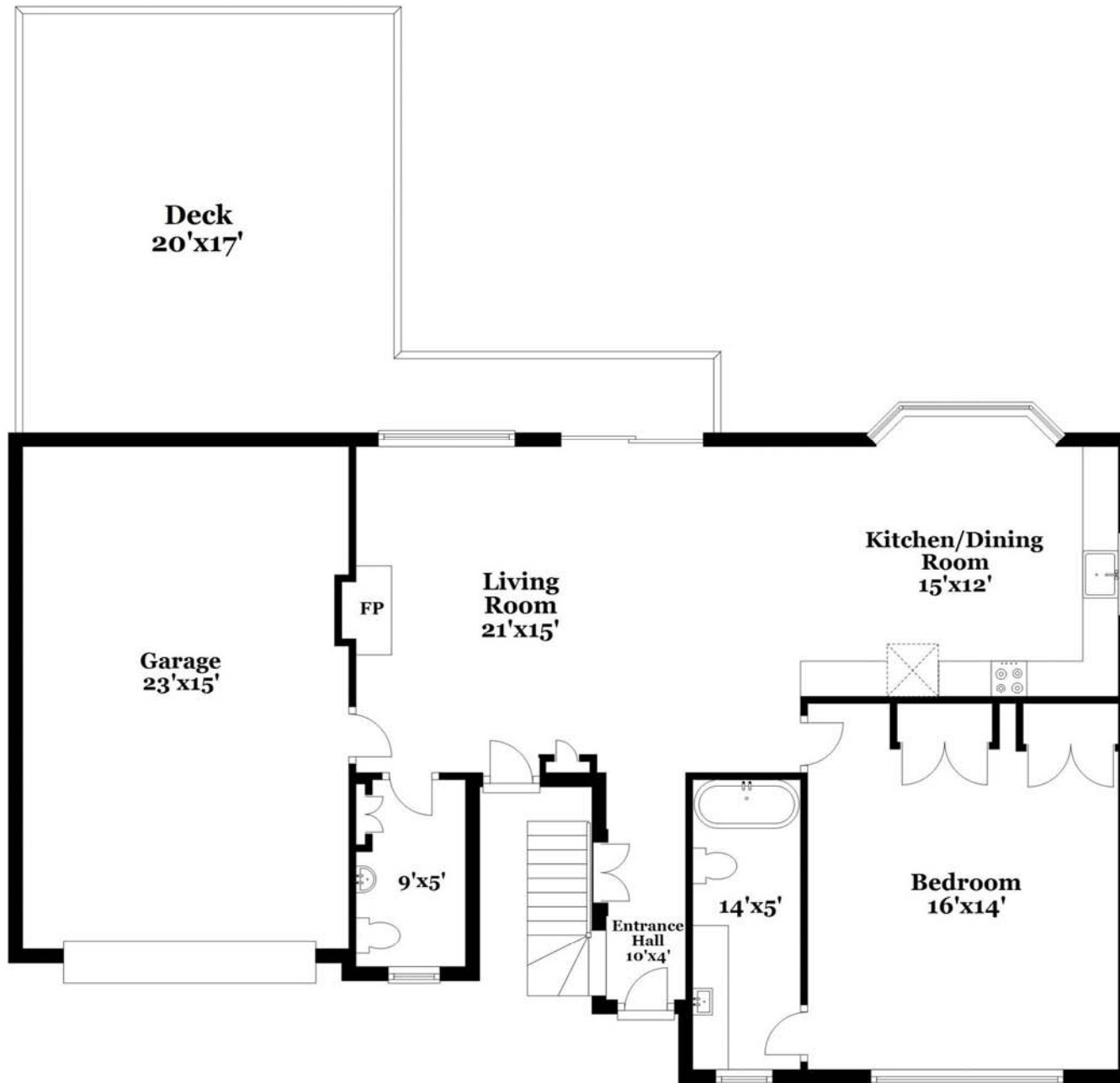


**Exclusively Represented by**  
**Barbara Hussey & Lynn O'Neill**

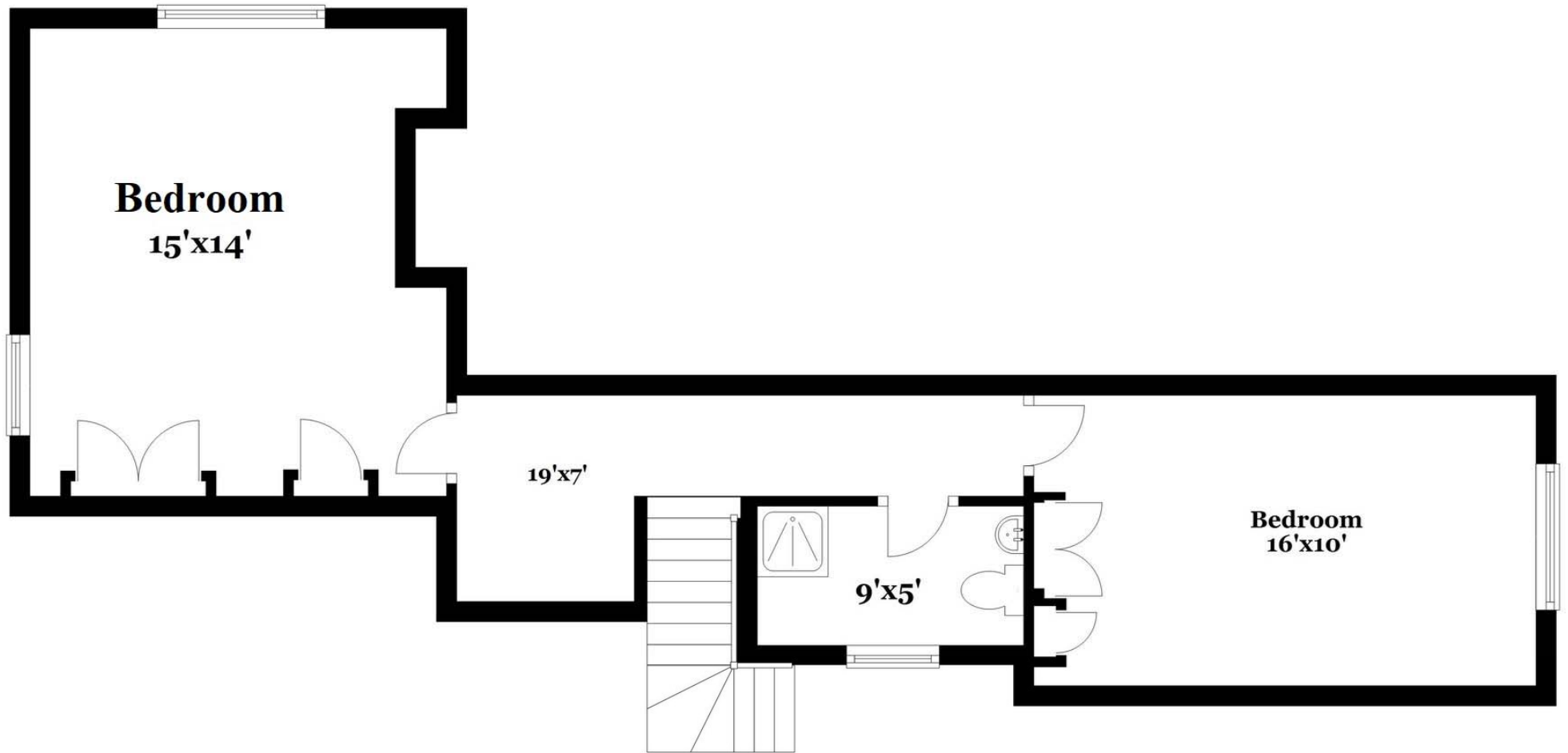
Robert Paul Properties  
508.274.1933 & 508.524.7325

BHussey@robertpaul.com & Lynn@robertpaul.com | www.RobertPaul.com

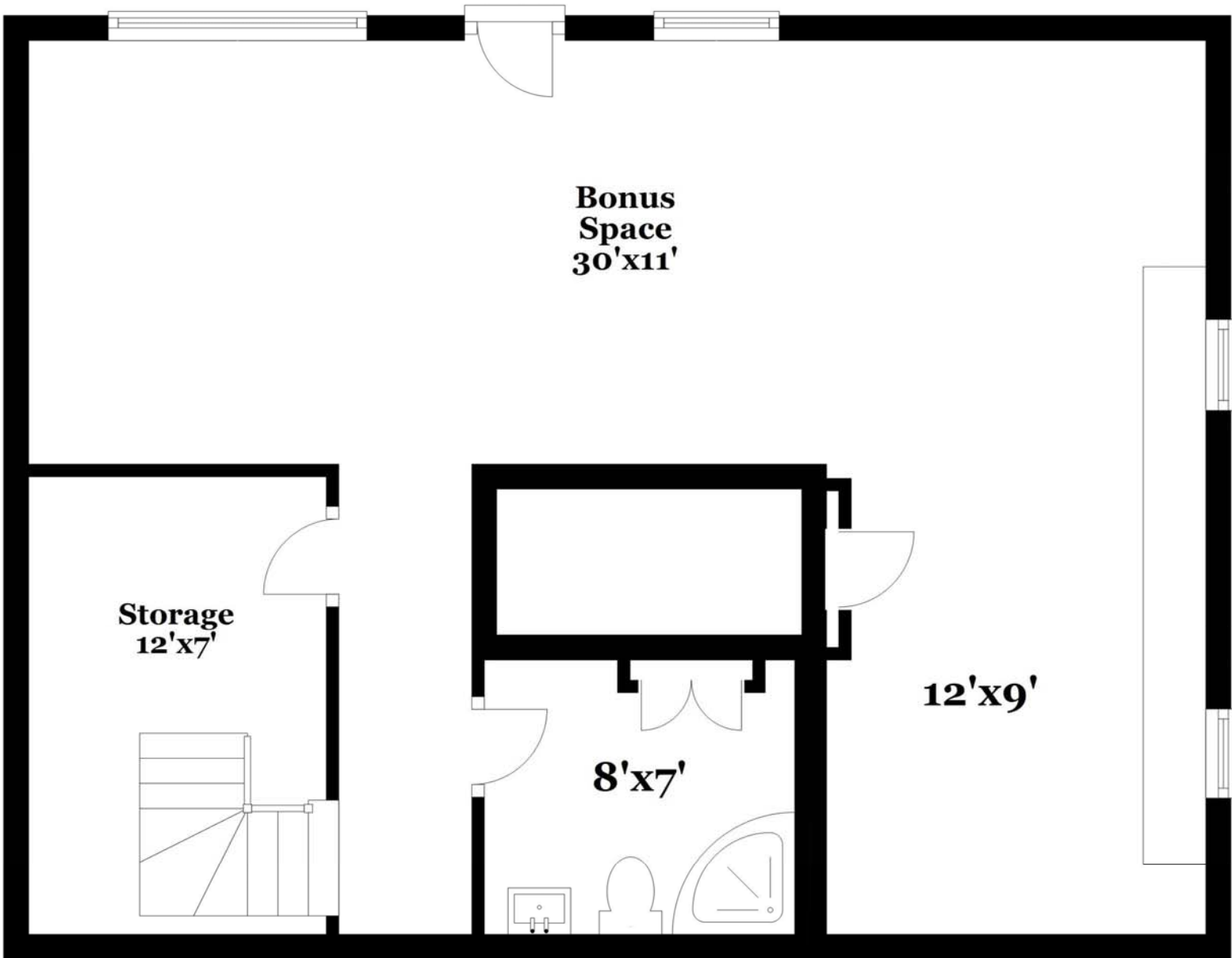
This information was gathered from third party sources including the seller and public records, without further verification. Robert Paul Properties disclaims any and all representation or warranties as to the accuracy of this information. Prospective buyers are advised to verify all information and to retain appropriate professionals (inspectors, engineers, attorneys, etc.) to obtain advice or assistance. This listing is subject to change or withdrawal without notice.



All measurements are approximate and not guaranteed. This illustration is provided for marketing and convenience only. All information should be verified independently. © PlanOmatic



All measurements are approximate and not guaranteed. This illustration is provided for marketing and convenience only. All information should be verified independently. © PlanOmatic



All measurements are approximate and not guaranteed. This illustration is provided for marketing and convenience only. All information should be verified independently. © PlanOmatic